

METEOROLOGICAL DEPARTMENT CURAÇAO CLIMATOLOGICAL SUMMARY

Week 16

Week Starting:	18-Apr	2016
Week Ending:	24-Apr	2016

Station: HATO, Airport

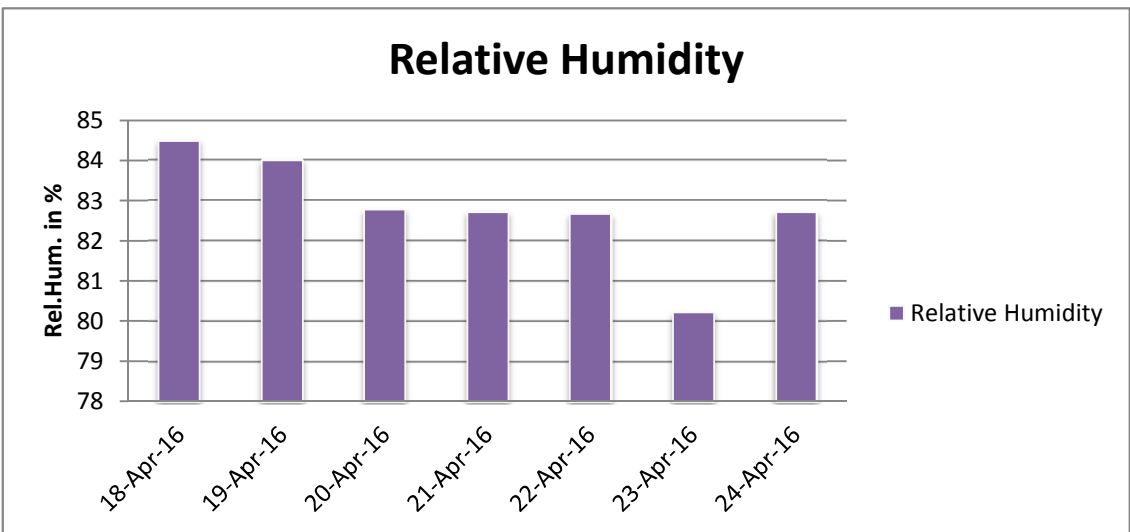
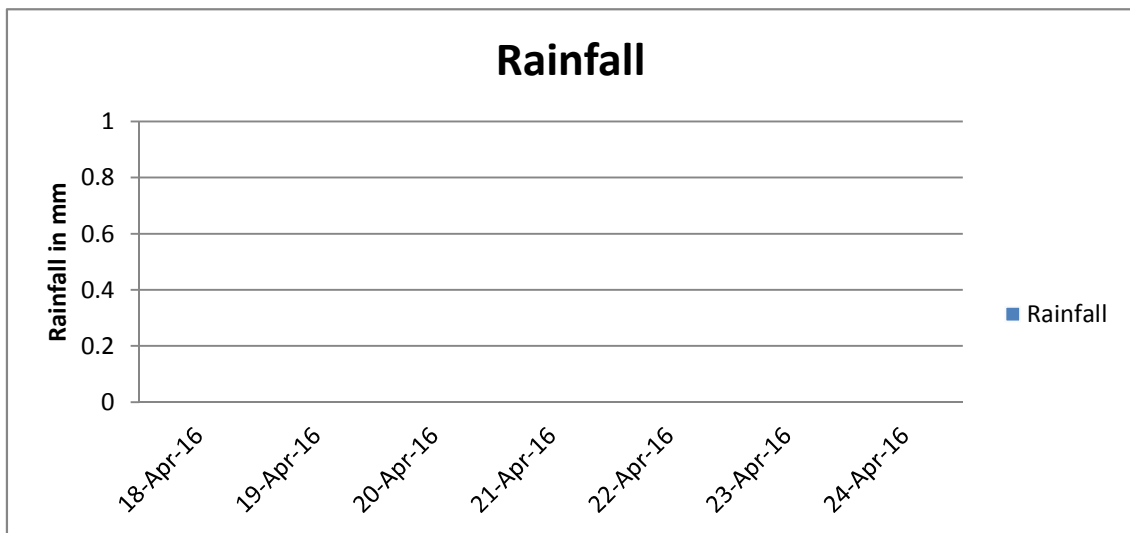
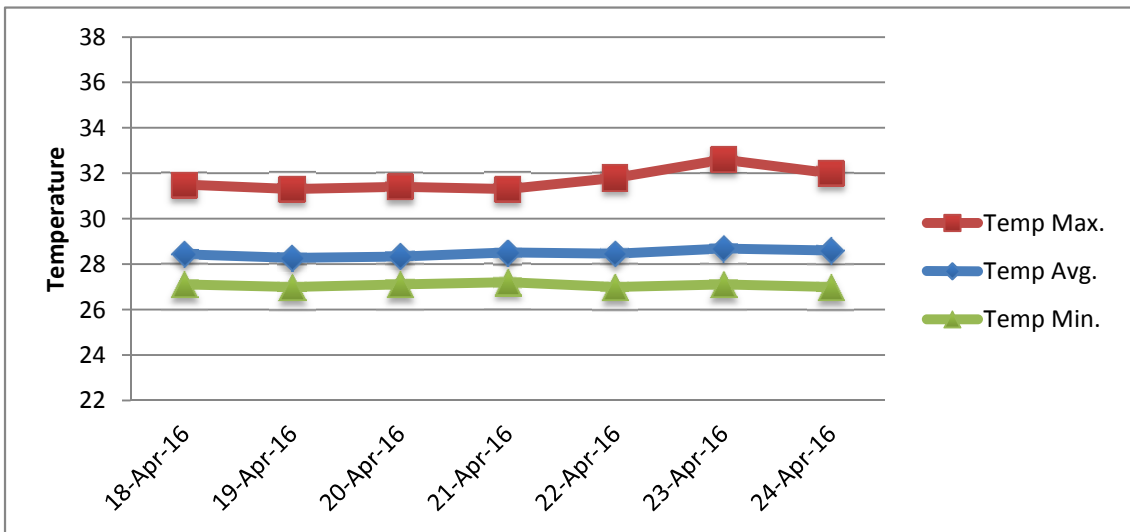
RAIN			DATE	TIME
Rainfall total	0.0	mm	-	-
Rainfall 24 hour's maximum	0.0	mm	-	-
Rainfall amount of days >= 1.0 mm	0		-	-
Rainfall cumulative	19.3	mm	-	-
TEMPERATURE				
Temperature weekly average	28.5	°C	-	-
Temperature weekly max. average	31.7	°C	-	-
Temperature absolute max.	32.6	°C	23-Apr-16	14:52
Temperature weekly min. average	27.1	°C	-	-
Temperature absolute min.	27.0	°C	22-Apr-16	5:24
Relative humidity weekly average	82.8	%	-	-
WIND				
Wind speed weekly average	12.1	kts	-	-
Wind speed average max.	23.9	kts	-	-
Wind speed absolute max.	30	kts	23-Apr-16	11:25
Wind vector weekly average	91	°	-	-
Wind energy potential total *	26,383	KWhr / m ²	-	-
Wind energy weekly average *	3769	Whr / m ² / day	-	-
Wind energy potential maximum *	5694	Whr / m ² / day	21-Apr-16	-
Wind energy potential minimum *	2014	Whr / m ² / day	18-Apr-16	-
EVAPORATION				
Evaporation daily average	8.51	mm	-	-
Evaporation weekly total	59.58	mm	-	-
Evaporation maximum	11.56	mm	19-Apr-16	-
SUNSHINE				
Sunshine duration weekly average	5 hrs	21 min	-	-
Sunshine absolute max.	8 hrs	48 min	24-Apr-16	-
Sunshine absolute min.	2 hrs	0 min	19-Apr-16	-
Solar radiation weekly average	4636	Whr / m ² / day	-	-
Solar radiation absolute max.	6037	Whr / m ² / day	-	-
Solar radiation absolute min.	3033	Whr / m ² / day	-	-
REMARKS				

* Wind energy at a height of 10 m for windspeeds of 4 m/s or more.

_ Blank field - No data available



METEOROLOGICAL DEPARTMENT CURAÇAO CLIMATOLOGICAL SUMMARY



METEOROLOGICAL DEPARTMENT CURAÇAO CLIMATOLOGICAL SUMMARY

