

# METEOROLOGICAL DEPARTMENT CURAÇAO CLIMATOLOGICAL SUMMARY

**Week 21**

<b>Week Starting:</b>	23-May	2016
<b>Week Ending:</b>	29-May	2016

**Station: HATO, Airport**

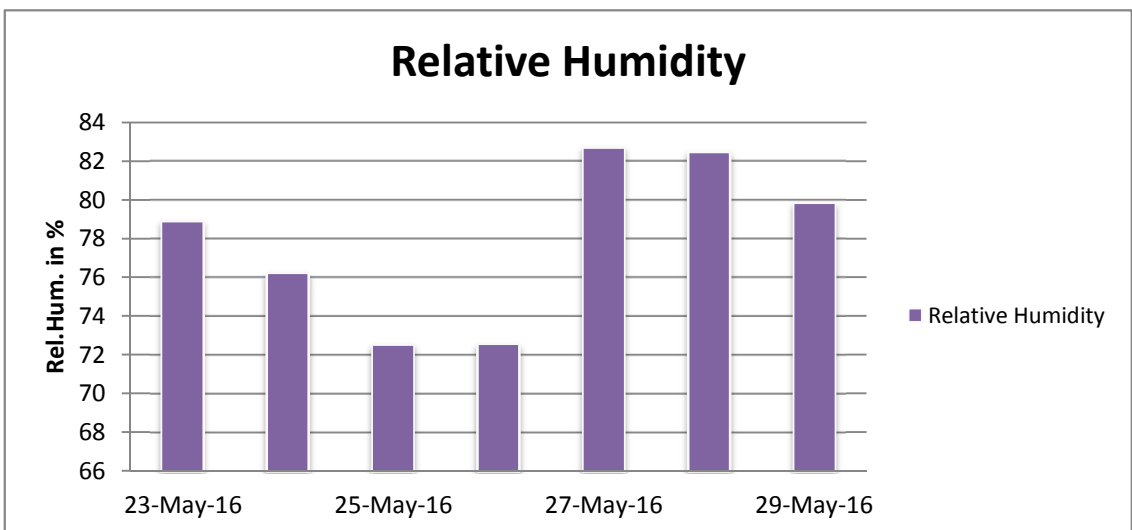
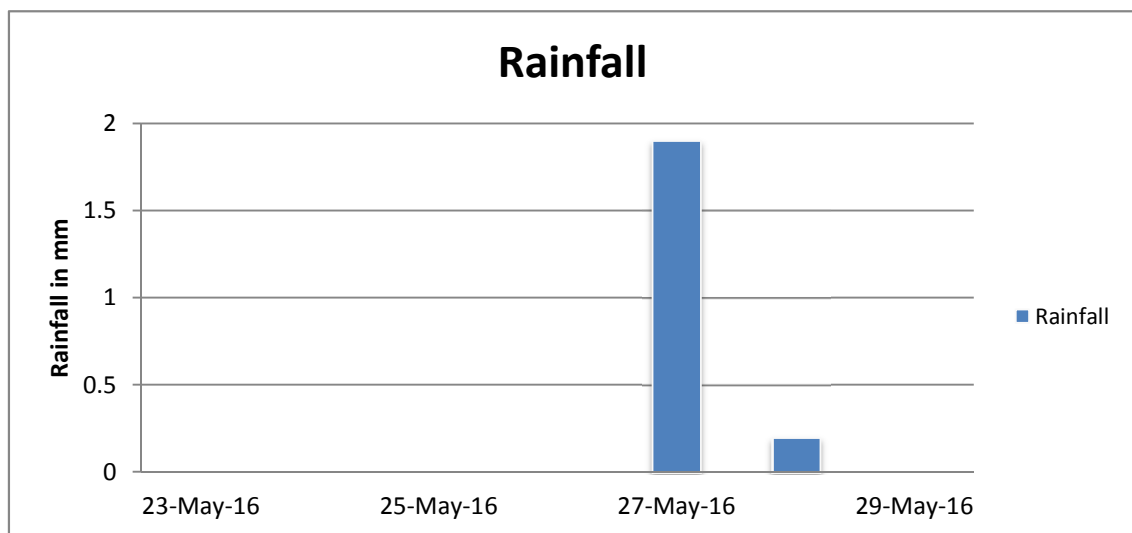
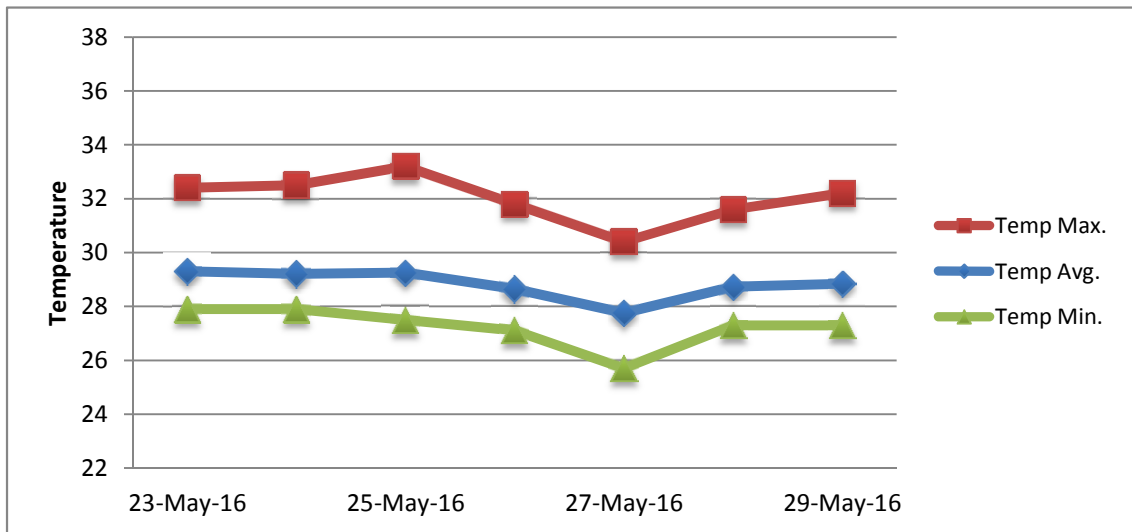
RAIN			DATE	TIME
Rainfall total	2.1	mm	-	-
Rainfall 24 hour's maximum	1.9	mm	27-May-16	-
Rainfall amount of days >= 1.0 mm	0		-	-
Rainfall cumulative	21.6	mm	-	-
TEMPERATURE				
Temperature weekly average	28.8	°C	-	-
Temperature weekly max. average	32.0	°C	-	-
Temperature absolute max.	33.2	°C	25-May-16	15:13
Temperature weekly min. average	27.2	°C	-	-
Temperature absolute min.	25.7	°C	27-May-16	1:57
Relative humidity weekly average	77.9	%	-	-
WIND				
Wind speed weekly average	13.9	kts	-	-
Wind speed average max.	26.6	kts	-	-
Wind speed absolute max.	30	kts	23-May-16	11:38
Wind vector weekly average	99	°	-	-
Wind energy potential total *	39,055	KWhr / m <sup>2</sup>	-	-
Wind energy weekly average *	5579	Whr / m <sup>2</sup> / day	-	-
Wind energy potential maximum *	9144	Whr / m <sup>2</sup> / day	24-May-16	-
Wind energy potential minimum *	3434	Whr / m <sup>2</sup> / day	28-May-16	-
EVAPORATION				
Evaporation daily average	7.53	mm	-	-
Evaporation weekly total	52.74	mm	-	-
Evaporation maximum	11.51	mm	22-May-16	-
SUNSHINE				
Sunshine duration weekly average	6 hrs	24 min	-	-
Sunshine absolute max.	10 hrs	54 min	23-May-16	-
Sunshine absolute min.	1 hrs	18 min	27-May-16	-
Solar radiation weekly average	4719	Whr / m <sup>2</sup> / day	-	-
Solar radiation absolute max.	6468	Whr / m <sup>2</sup> / day	-	-
Solar radiation absolute min.	2763	Whr / m <sup>2</sup> / day	-	-
REMARKS				

\* Wind energy at a height of 10 m for windspeeds of 4 m/s or more.

\_ Blank field - No data available



# METEOROLOGICAL DEPARTMENT CURAÇAO CLIMATOLOGICAL SUMMARY



# METEOROLOGICAL DEPARTMENT CURAÇAO CLIMATOLOGICAL SUMMARY

