

METEOROLOGICAL DEPARTMENT CURAÇAO CLIMATOLOGICAL SUMMARY

Week 26

Week Starting:	27-Jun	2016
Week Ending:	3-Jul	2016

Station: HATO, Airport

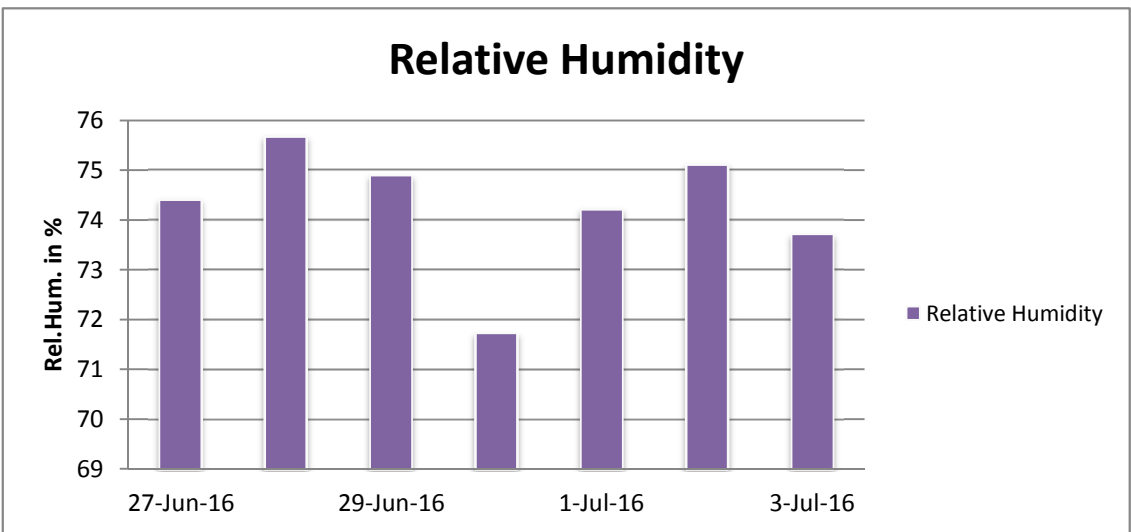
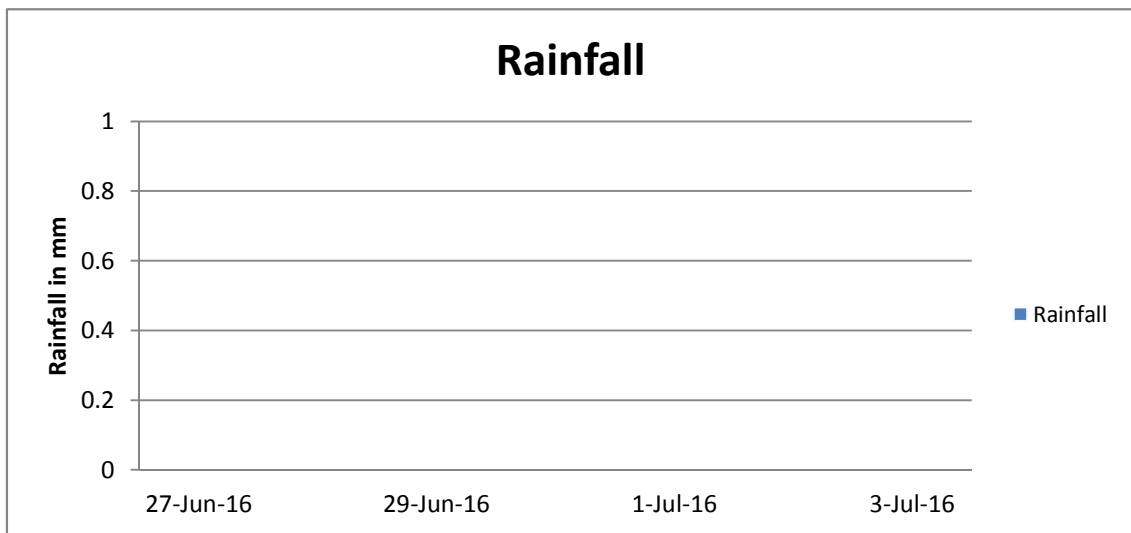
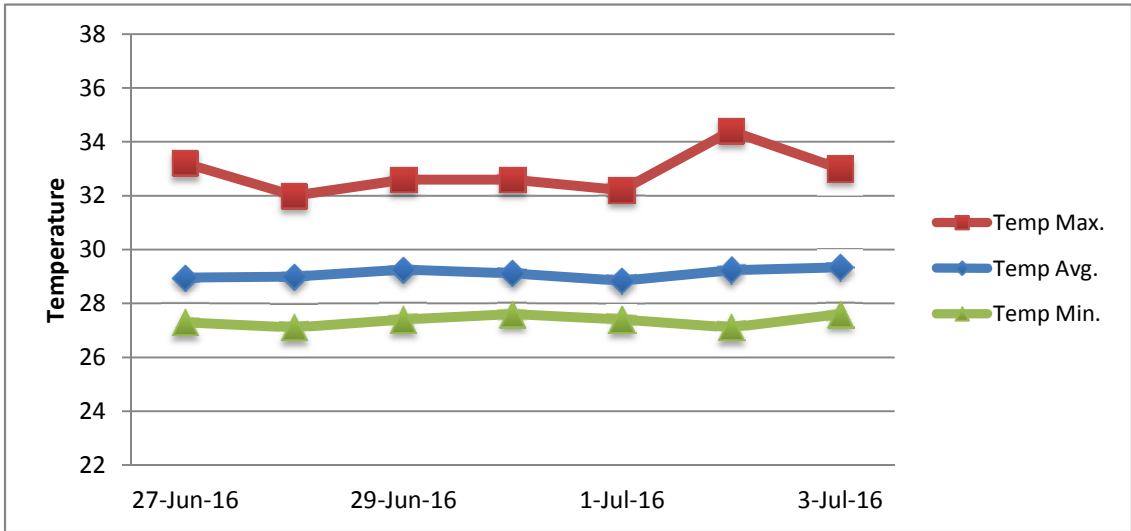
RAIN			DATE	TIME
Rainfall total	0.0	mm	-	-
Rainfall 24 hour's maximum	0.0	mm	-	-
Rainfall amount of days >= 1.0 mm	-		-	-
Rainfall cumulative	31.7	mm	-	-
TEMPERATURE				
Temperature weekly average	29.1	°C	-	-
Temperature weekly max. average	32.9	°C	-	-
Temperature absolute max.	34.4	°C	2-Jul-16	13:35
Temperature weekly min. average	27.4	°C	-	-
Temperature absolute min.	27.1	°C	28-Jun-16	4:54
Relative humidity weekly average	74.2	%	-	-
WIND				
Wind speed weekly average	14.3	kts	-	-
Wind speed average max.	27.6	kts	-	-
Wind speed absolute max.	34	kts	30-Jun-16	9:14
Wind vector weekly average	97	°	-	-
Wind energy potential total *	41,661	KWhr / m ²	-	-
Wind energy weekly average *	5952	Whr / m ² / day	-	-
Wind energy potential maximum *	8648	Whr / m ² / day	30-Jun-16	-
Wind energy potential minimum *	3466	Whr / m ² / day	2-Jul-16	-
EVAPORATION				
Evaporation daily average	8.76	mm	-	-
Evaporation weekly total	61.31	mm	-	-
Evaporation maximum	10.60	mm	1-Jul-16	-
SUNSHINE				
Sunshine duration weekly average	8 hrs	12 min	-	-
Sunshine absolute max.	9 hrs	36 min	28-Jun-16	-
Sunshine absolute min.	7 hrs	6 min	1-Jul-16	-
Solar radiation weekly average	5348	Whr / m ² / day	-	-
Solar radiation absolute max.	6202	Whr / m ² / day	-	-
Solar radiation absolute min.	4218	Whr / m ² / day	-	-
REMARKS				

* Wind energy at a height of 10 m for windspeeds of 4 m/s or more.

_ Blank field - No data available



METEOROLOGICAL DEPARTMENT CURAÇAO CLIMATOLOGICAL SUMMARY



METEOROLOGICAL DEPARTMENT CURAÇAO CLIMATOLOGICAL SUMMARY

