

METEOROLOGICAL DEPARTMENT CURAÇAO CLIMATOLOGICAL SUMMARY

Week 33

Week Starting:	15-Aug	2016
Week Ending:	21-Aug	2016

Station: HATO, Airport

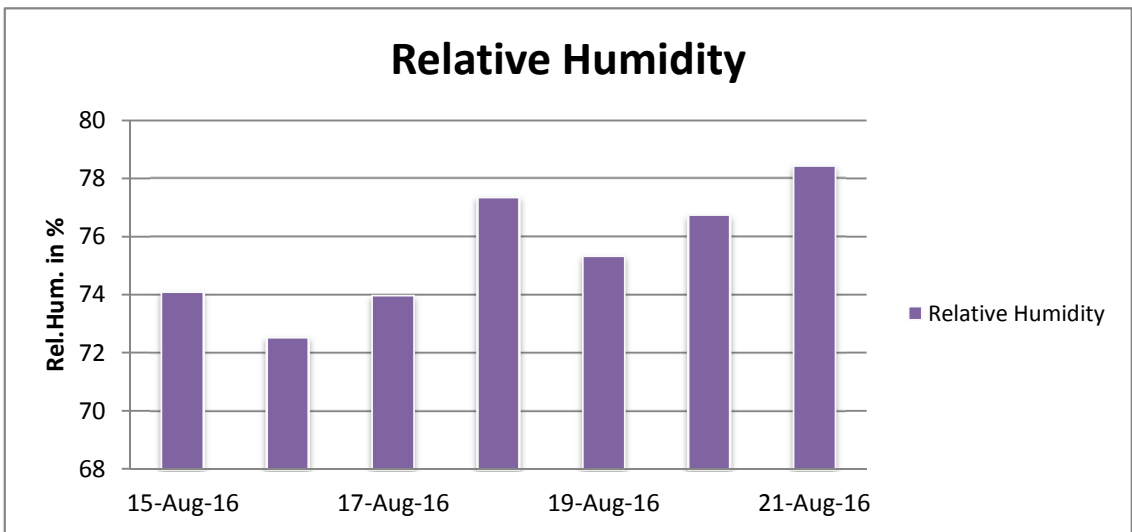
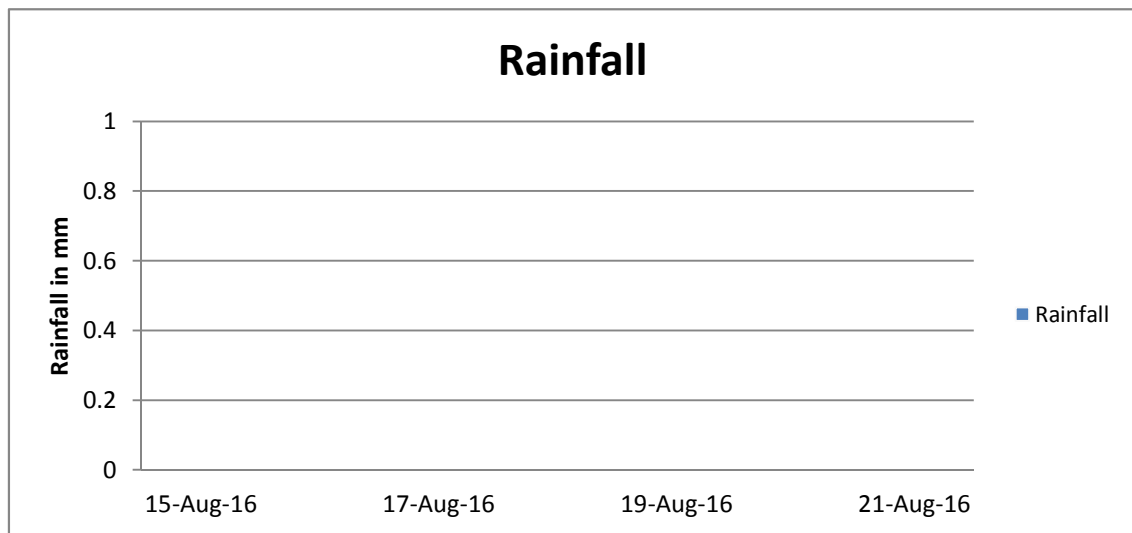
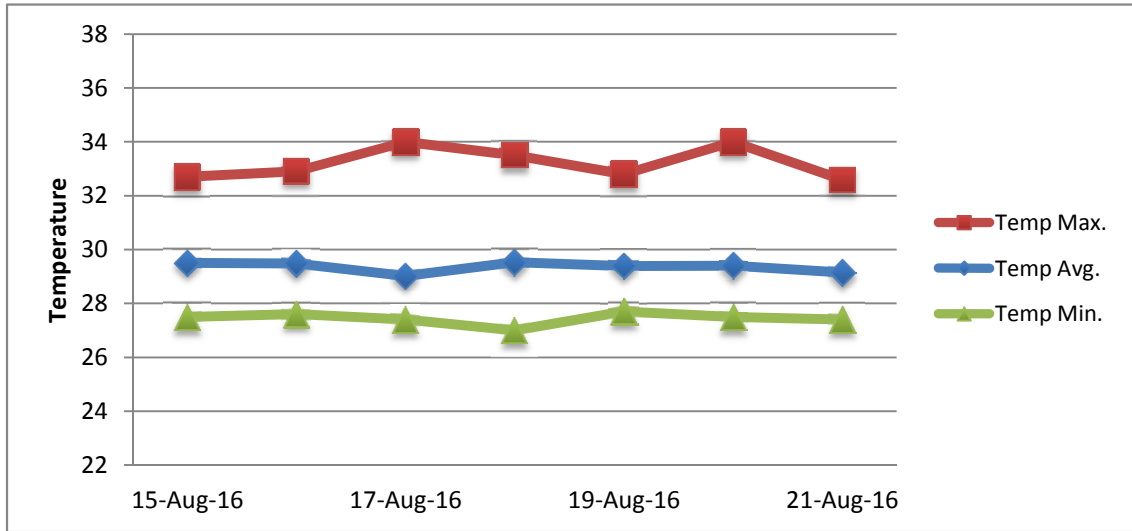
RAIN			DATE	TIME
Rainfall total	0.0	mm	-	-
Rainfall 24 hour's maximum	0.0	mm	-	-
Rainfall amount of days >= 1.0 mm	-		-	-
Rainfall cumulative	62.9	mm	-	-
TEMPERATURE				
Temperature weekly average	29.4	°C	-	-
Temperature weekly max. average	33.2	°C	-	-
Temperature absolute max.	34.0	°C	17-Aug-16	13:06
Temperature weekly min. average	27.4	°C	-	-
Temperature absolute min.	27.0	°C	18-Aug-16	5:09
Relative humidity weekly average	75.5	%	-	-
WIND				
Wind speed weekly average	13.1	kts	-	-
Wind speed average max.	24.1	kts	-	-
Wind speed absolute max.	28	kts	15-Aug-16	18:48
Wind vector weekly average	93	°	-	-
Wind energy potential total *	31,863	KWhr / m ²	-	-
Wind energy weekly average *	4552	Whr / m ² / day	-	-
Wind energy potential maximum *	7120	Whr / m ² / day	15-Aug-16	-
Wind energy potential minimum *	2992	Whr / m ² / day	18-Aug-16	-
EVAPORATION				
Evaporation daily average	9.87	mm	-	-
Evaporation weekly total	69.1	mm	-	-
Evaporation maximum	12.68	mm	15-Aug-16	-
SUNSHINE				
Sunshine duration weekly average	10 hrs	37 min	-	-
Sunshine absolute max.	11 hrs	0 min	21-Aug-16	-
Sunshine absolute min.	10 hrs	48 min	15-Aug-16	-
Solar radiation weekly average	5937	Whr / m ² / day	-	-
Solar radiation absolute max.	7090	Whr / m ² / day	-	-
Solar radiation absolute min.	4436	Whr / m ² / day	-	-
REMARKS				

* Wind energy at a height of 10 m for windspeeds of 4 m/s or more.

_ Blank field - No data available



METEOROLOGICAL DEPARTMENT CURAÇAO CLIMATOLOGICAL SUMMARY



METEOROLOGICAL DEPARTMENT CURAÇAO CLIMATOLOGICAL SUMMARY

