

# METEOROLOGICAL DEPARTMENT CURAÇAO CLIMATOLOGICAL SUMMARY

**Week 38**

<b>Week Starting:</b>	19-Sep	2016
<b>Week Ending:</b>	25-Sep	2016

**Station: HATO, Airport**

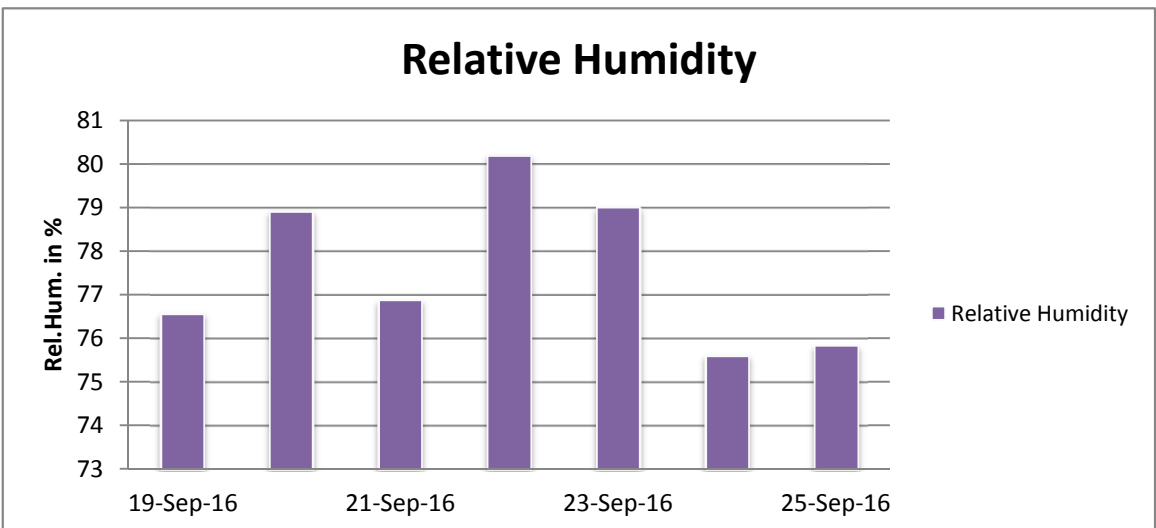
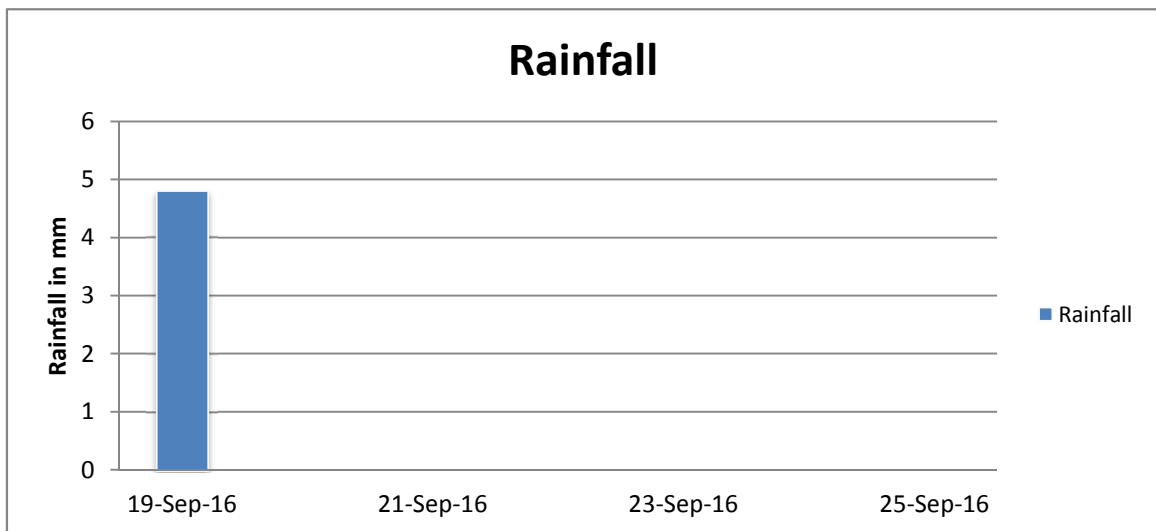
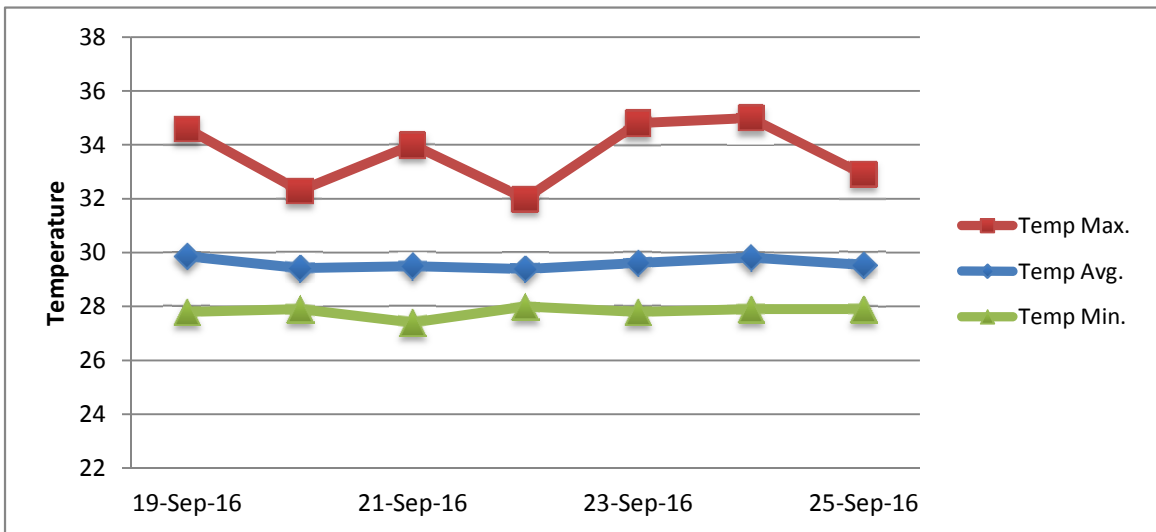
RAIN			DATE	TIME
Rainfall total	4.8	mm	-	-
Rainfall 24 hour's maximum	4.8	mm	19-Sep-16	-
Rainfall amount of days >= 1.0 mm	1		-	-
Rainfall cumulative	106.2	mm	-	-
TEMPERATURE				
Temperature weekly average	29.6	°C	-	-
Temperature weekly max. average	33.7	°C	-	-
Temperature absolute max.	35.0	°C	15-Sep-16	11:21
Temperature weekly min. average	27.8	°C	-	-
Temperature absolute min.	27.4	°C	15-Sep-16	7:59
Relative humidity weekly average	77.6	%	-	-
WIND				
Wind speed weekly average	11.8	kts	-	-
Wind speed average max.	23.1	kts	-	-
Wind speed absolute max.	26	kts	14-Sep-16	12:46
Wind vector weekly average	95	°	-	-
Wind energy potential total *	24,315	KWhr / m <sup>2</sup>	-	-
Wind energy weekly average *	3474	Whr / m <sup>2</sup> /day	-	-
Wind energy potential maximum *	4616	Whr / m <sup>2</sup> /day	18-Sep-16	-
Wind energy potential minimum *	2404	Whr / m <sup>2</sup> /day	14-Sep-16	-
EVAPORATION				
Evaporation daily average	8.06	mm	-	-
Evaporation weekly total	56.44	mm	-	-
Evaporation maximum	9.16	mm	14-Sep-16	-
SUNSHINE				
Sunshine duration weekly average	9 hrs	24 min	-	-
Sunshine absolute max.	11 hrs	0 min	16-Sep-16	-
Sunshine absolute min.	7 hrs	18 min	14-Sep-16	-
Solar radiation weekly average	5731	Whr / m <sup>2</sup> /day	-	-
Solar radiation absolute max.	6909	Whr / m <sup>2</sup> /day	-	-
Solar radiation absolute min.	4811	Whr / m <sup>2</sup> /day	-	-
REMARKS				

\* Wind energy at a height of 10 m for windspeeds of 4 m/s or more.

\_ Blank field - No data available



# METEOROLOGICAL DEPARTMENT CURAÇAO CLIMATOLOGICAL SUMMARY



# METEOROLOGICAL DEPARTMENT CURAÇAO CLIMATOLOGICAL SUMMARY

