

METEOROLOGICAL DEPARTMENT CURAÇAO CLIMATOLOGICAL SUMMARY

Week 40

Week Starting:	3-Oct	2016
Week Ending:	9-Oct	2016

Station: HATO, Airport

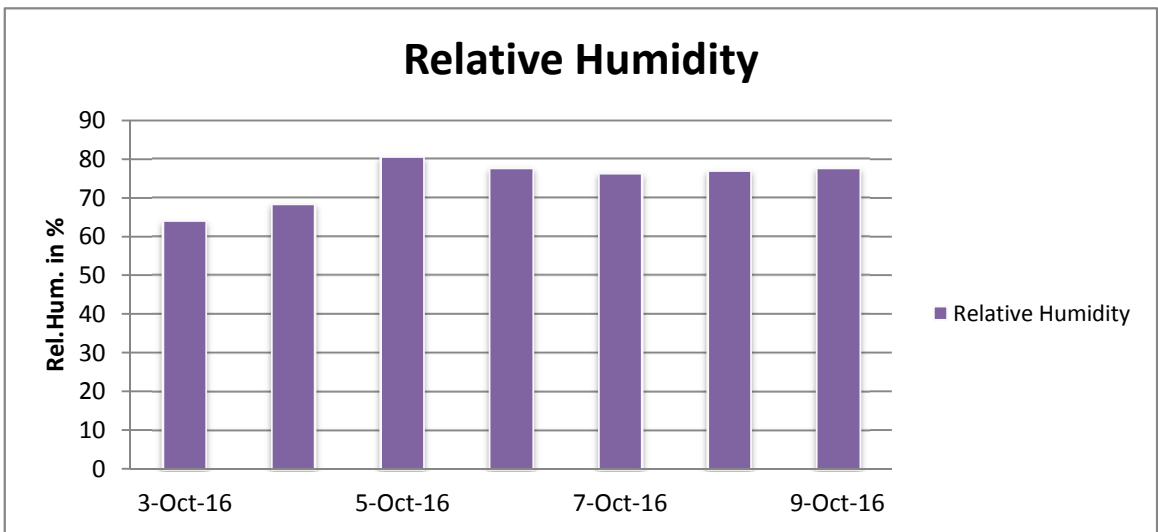
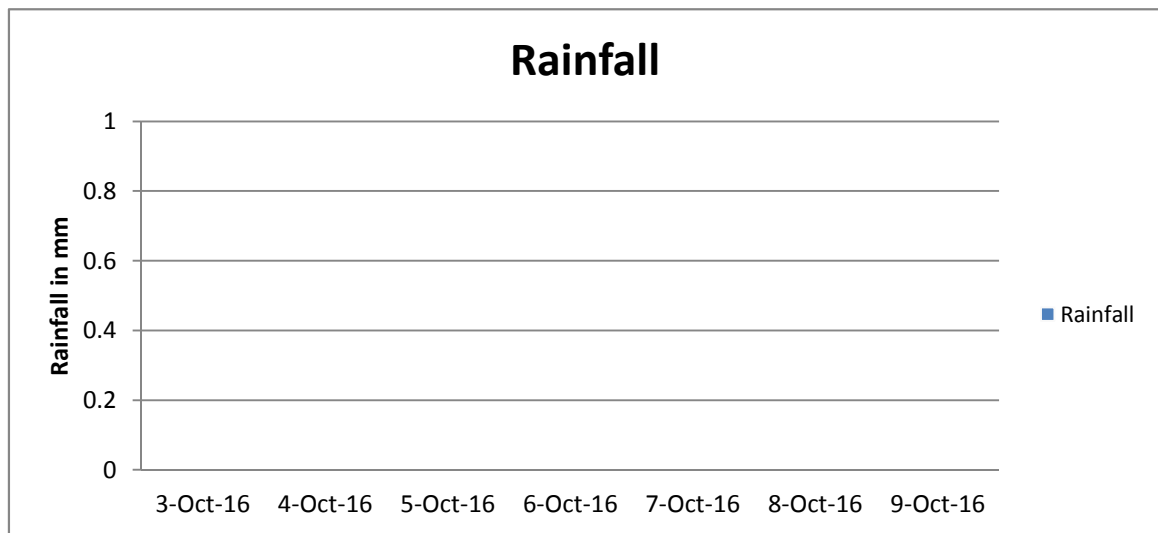
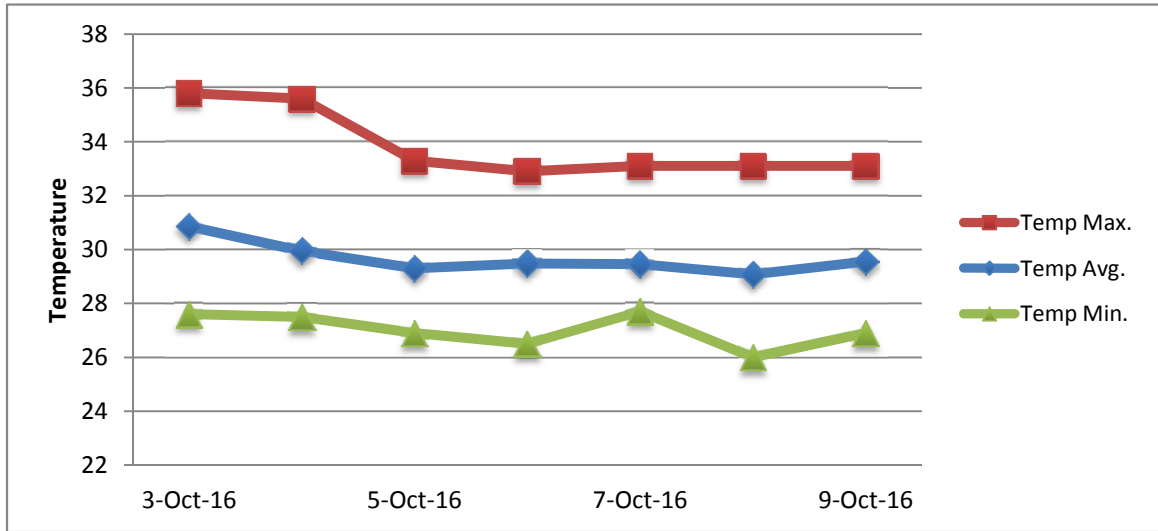
RAIN			DATE	TIME
Rainfall total	0.0	mm	-	-
Rainfall 24 hour's maximum	0.0	mm	-	-
Rainfall amount of days >= 1.0 mm	-		-	-
Rainfall cumulative	117.6	mm	-	-
TEMPERATURE				
Temperature weekly average	29.7	°C	-	-
Temperature weekly max. average	33.8	°C	-	-
Temperature absolute max.	35.8	°C	3-Oct-16	13:32
Temperature weekly min. average	27.0	°C	-	-
Temperature absolute min.	26.0	°C	8-Oct-16	6:12
Relative humidity weekly average	74.4	%	-	-
WIND				
Wind speed weekly average	9.6	kts	-	-
Wind speed average max.	20.9	kts	-	-
Wind speed absolute max.	30	kts	3-Oct-16	17:58
Wind vector weekly average	106	°	-	-
Wind energy potential total *	16,359	KWhr / m ²	-	-
Wind energy weekly average *	2337	Whr / m ² /day	-	-
Wind energy potential maximum *	6472	Whr / m ² /day	3-Oct-16	-
Wind energy potential minimum *	173	Whr / m ² /day	8-Oct-16	-
EVAPORATION				
Evaporation daily average	7.34	mm	-	-
Evaporation weekly total	51.39	mm	-	-
Evaporation maximum	14.97	mm	6-Oct-16	-
SUNSHINE				
Sunshine duration weekly average	9 hrs	33 min	-	-
Sunshine absolute max.	10 hrs	54 min	5-Oct-16	-
Sunshine absolute min.	6 hrs	12 min	3-Oct-16	-
Solar radiation weekly average	5790	Whr / m ² /day	-	-
Solar radiation absolute max.	6343	Whr / m ² /day	-	-
Solar radiation absolute min.	4985	Whr / m ² /day	-	-
REMARKS				

* Wind energy at a height of 10 m for windspeeds of 4 m/s or more.

_ Blank field - No data available



METEOROLOGICAL DEPARTMENT CURAÇAO CLIMATOLOGICAL SUMMARY



METEOROLOGICAL DEPARTMENT CURAÇAO CLIMATOLOGICAL SUMMARY

