

METEOROLOGICAL DEPARTMENT CURAÇAO CLIMATOLOGICAL SUMMARY

Week 36

Week Starting:	5-Sep	2016
Week Ending:	11-Sep	2016

Station: HATO, Airport

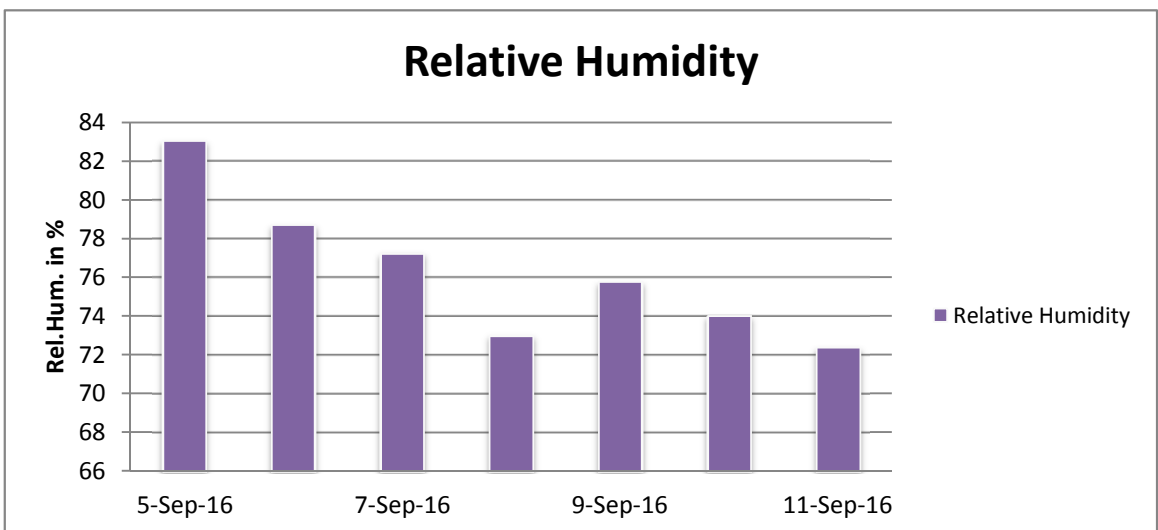
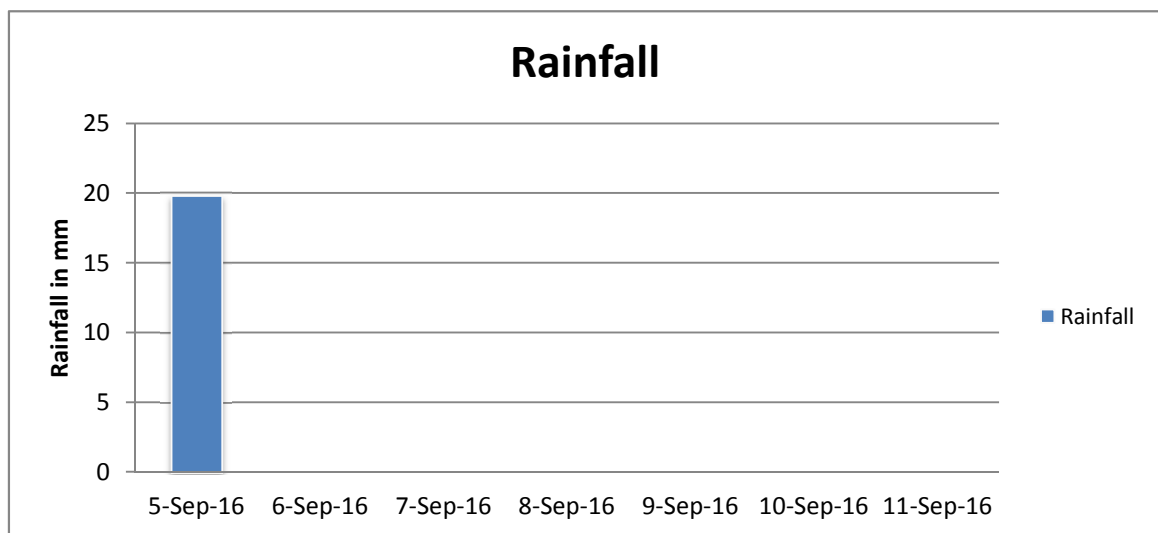
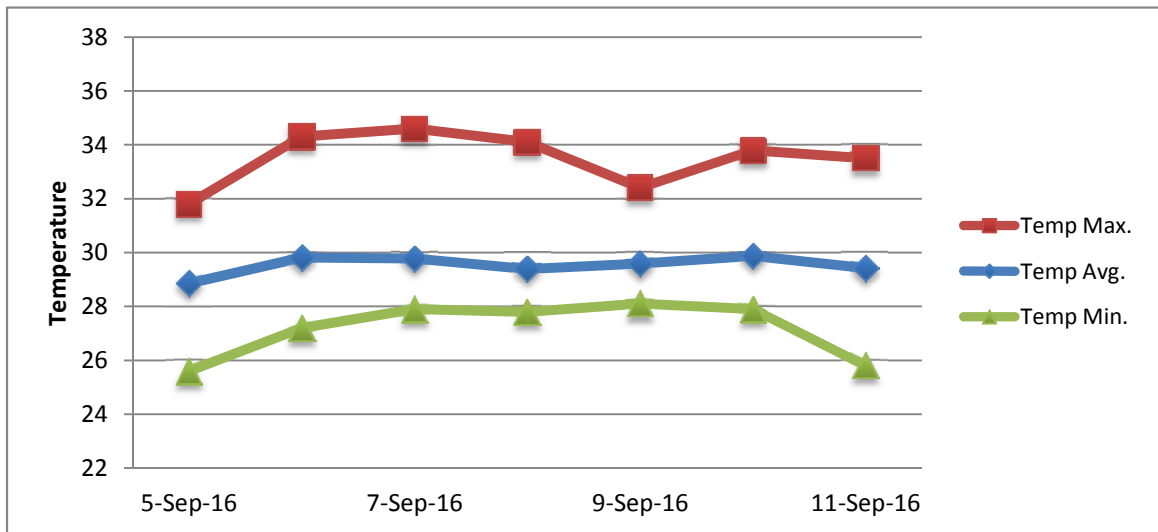
RAIN			DATE	TIME
Rainfall total	19.8	mm	-	-
Rainfall 24 hour's maximum	19.8	mm	5-Sep-16	-
Rainfall amount of days >= 1.0 mm	1		-	-
Rainfall cumulative	82.7	mm	-	-
TEMPERATURE				
Temperature weekly average	29.5	°C	-	-
Temperature weekly max. average	33.5	°C	-	-
Temperature absolute max.	34.6	°C	7-Sep-16	11:55
Temperature weekly min. average	27.2	°C	-	-
Temperature absolute min.	25.6	°C	5-Sep-16	2:17
Relative humidity weekly average	76.3	%	-	-
WIND				
Wind speed weekly average	12.3	kts	-	-
Wind speed average max.	25.0	kts	-	-
Wind speed absolute max.	27	kts	6-Sep-16	13:58
Wind vector weekly average	96	°	-	-
Wind energy potential total *	28,251	KWhr / m ²	-	-
Wind energy weekly average *	4036	Whr / m ² /day	-	-
Wind energy potential maximum *	5111	Whr / m ² /day	10-Sep-16	-
Wind energy potential minimum *	972	Whr / m ² /day	5-Sep-16	-
EVAPORATION				
Evaporation daily average	8.12	mm	-	-
Evaporation weekly total	56.81	mm	-	-
Evaporation maximum	9.91	mm	11-Sep-16	-
SUNSHINE				
Sunshine duration weekly average	10 hrs	12 min	-	-
Sunshine absolute max.	11 hrs	6 min	6-Sep-16	-
Sunshine absolute min.	9 hrs	0 min	8-Sep-16	-
Solar radiation weekly average	5325	Whr / m ² /day	-	-
Solar radiation absolute max.	6021	Whr / m ² /day	-	-
Solar radiation absolute min.	2851	Whr / m ² /day	-	-
REMARKS				

* Wind energy at a height of 10 m for windspeeds of 4 m/s or more.

_ Blank field - No data available



METEOROLOGICAL DEPARTMENT CURAÇAO CLIMATOLOGICAL SUMMARY



METEOROLOGICAL DEPARTMENT CURAÇAO CLIMATOLOGICAL SUMMARY

