

# METEOROLOGICAL DEPARTMENT CURAÇAO CLIMATOLOGICAL SUMMARY

**Week 14**

<b>Week Starting:</b>	4-Apr	2016
<b>Week Ending:</b>	10-Apr	2016

**Station: HATO, Airport**

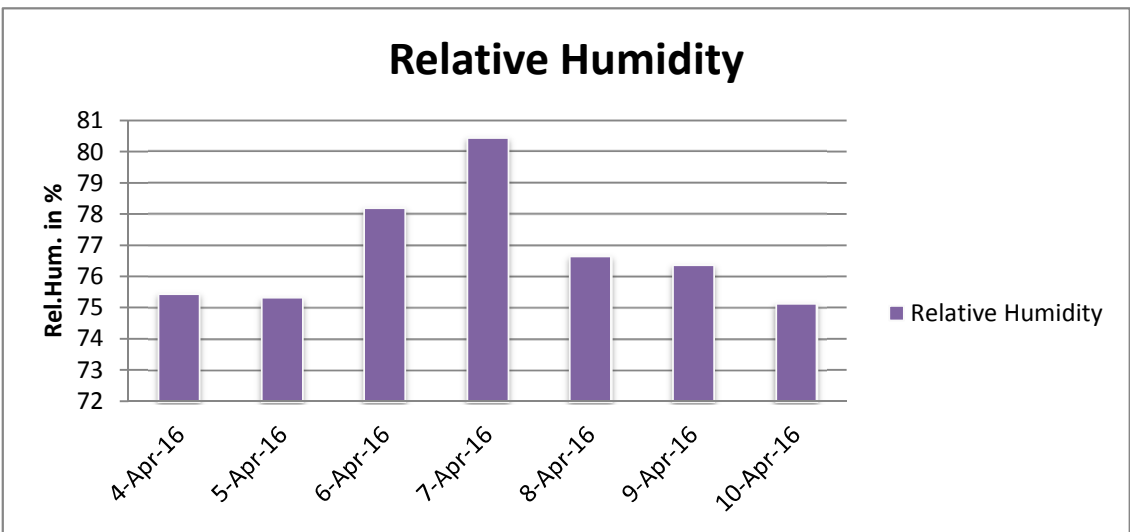
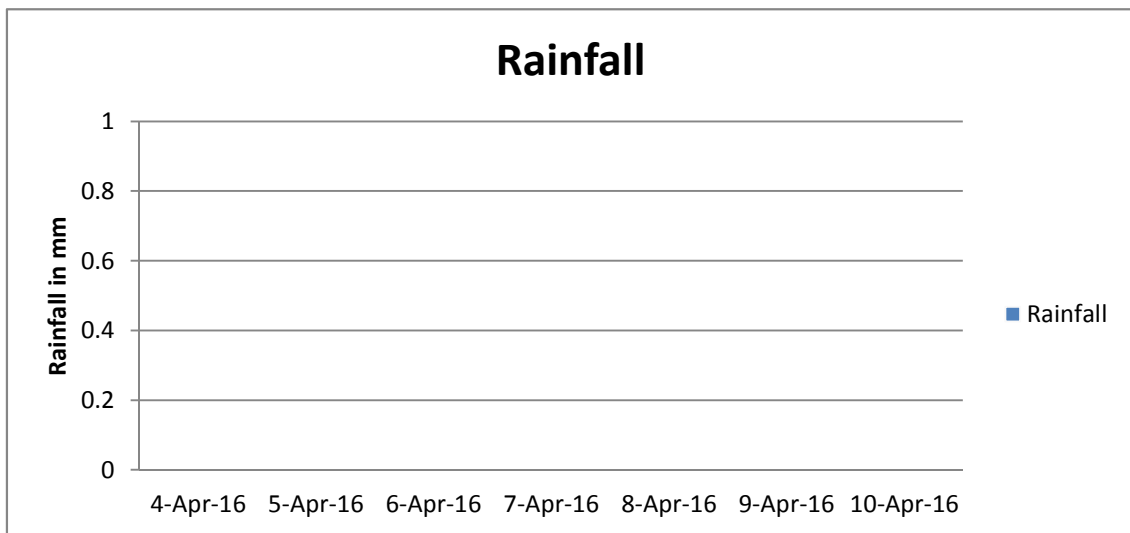
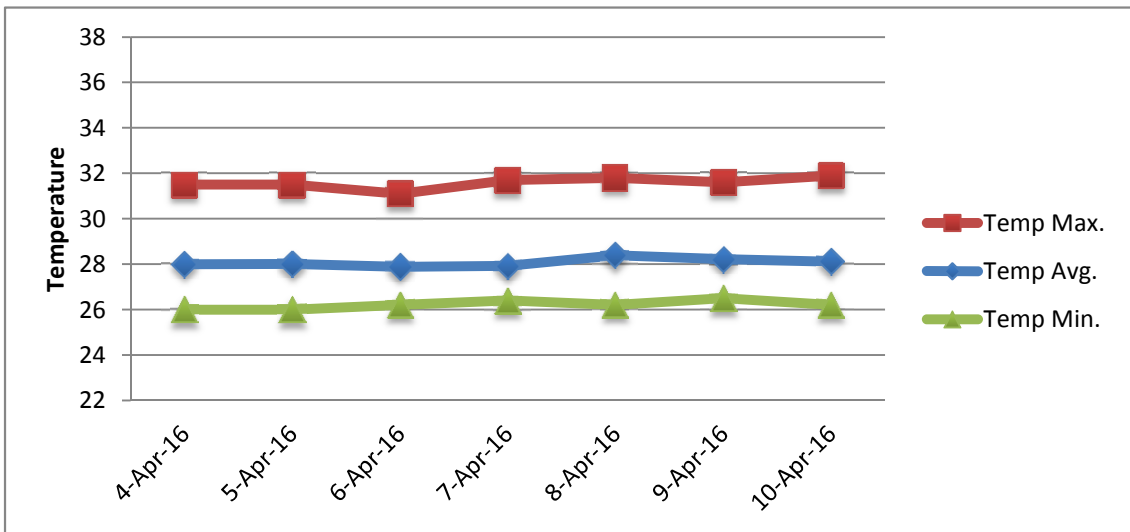
RAIN			DATE	TIME
Rainfall total	0.0	mm	-	-
Rainfall 24 hour's maximum	0.0	mm	-	-
Rainfall amount of days >= 1.0 mm	-		-	-
Rainfall cumulative	17.3	mm	-	-
TEMPERATURE				
Temperature weekly average	28.1	°C	-	-
Temperature weekly max. average	31.6	°C	-	-
Temperature absolute max.	31.9	°C	10-Apr-16	12:33
Temperature weekly min. average	26.2	°C	-	-
Temperature absolute min.	26.0	°C	4-Apr-16	5:02
Relative humidity weekly average	76.8	%	-	-
WIND				
Wind speed weekly average	12.1	kts	-	-
Wind speed average max.	21.6	kts	-	-
Wind speed absolute max.	23	kts	4-Apr-16	14:03
Wind vector weekly average	269	°	-	-
Wind energy potential total *	24,694	KWhr / m <sup>2</sup>	-	-
Wind energy weekly average *	3528	Whr / m <sup>2</sup> / day	-	-
Wind energy potential maximum *	4426	Whr / m <sup>2</sup> / day	8-Apr-16	-
Wind energy potential minimum *	2418	Whr / m <sup>2</sup> / day	6-Apr-16	-
EVAPORATION				
Evaporation daily average	8.81	mm	-	-
Evaporation weekly total	61.66	mm	-	-
Evaporation maximum	10.25	mm	9-Apr-16	-
SUNSHINE				
Sunshine duration weekly average	8 hrs	30 min	-	-
Sunshine absolute max.	10 hrs	48 min	4-Apr-16	-
Sunshine absolute min.	5 hrs	0 min	6-Apr-16	-
Solar radiation weekly average	6210	Whr / m <sup>2</sup> / day	-	-
Solar radiation absolute max.	7350	Whr / m <sup>2</sup> / day	-	-
Solar radiation absolute min.	4840	Whr / m <sup>2</sup> / day	-	-
REMARKS				

\* Wind energy at a height of 10 m for windspeeds of 4 m/s or more.

\_ Blank field - No data available



# METEOROLOGICAL DEPARTMENT CURAÇAO CLIMATOLOGICAL SUMMARY



# METEOROLOGICAL DEPARTMENT CURAÇAO CLIMATOLOGICAL SUMMARY

