

# METEOROLOGICAL DEPARTMENT CURAÇAO CLIMATOLOGICAL SUMMARY

**Week 22**

<b>Week Starting:</b>	30-May	2016
<b>Week Ending:</b>	5-Jun	2016

**Station: HATO, Airport**

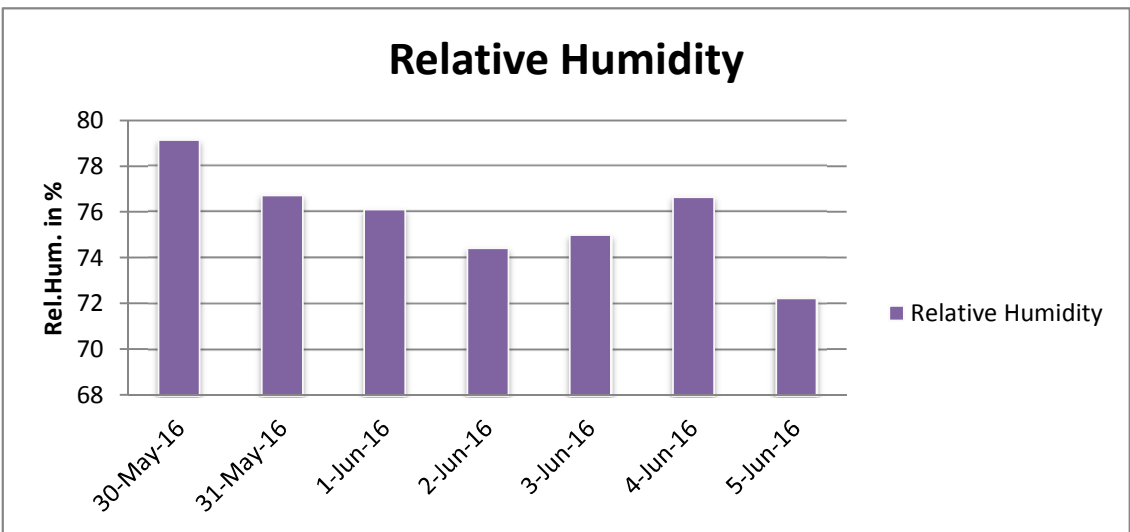
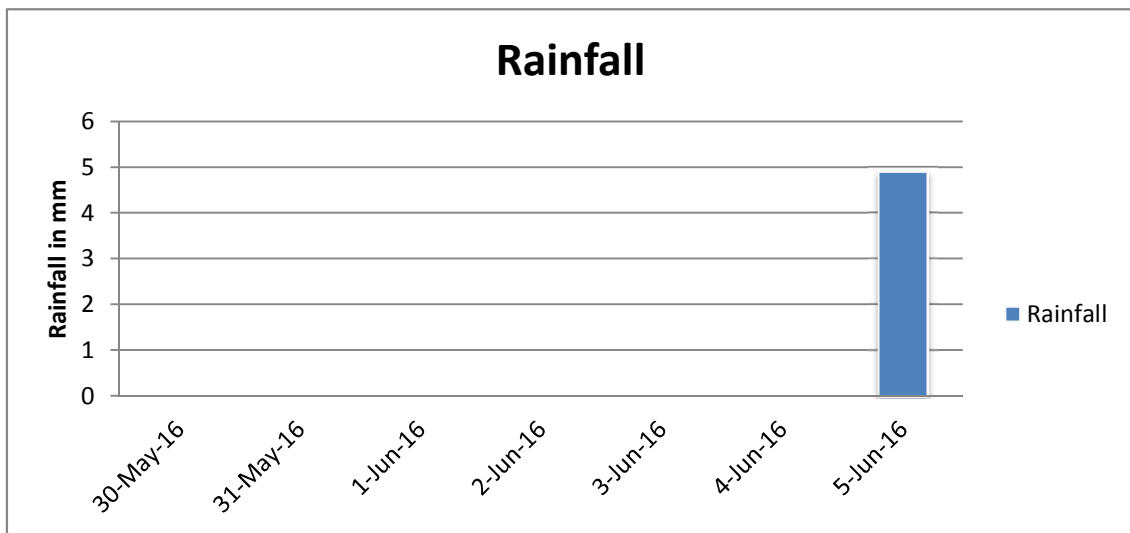
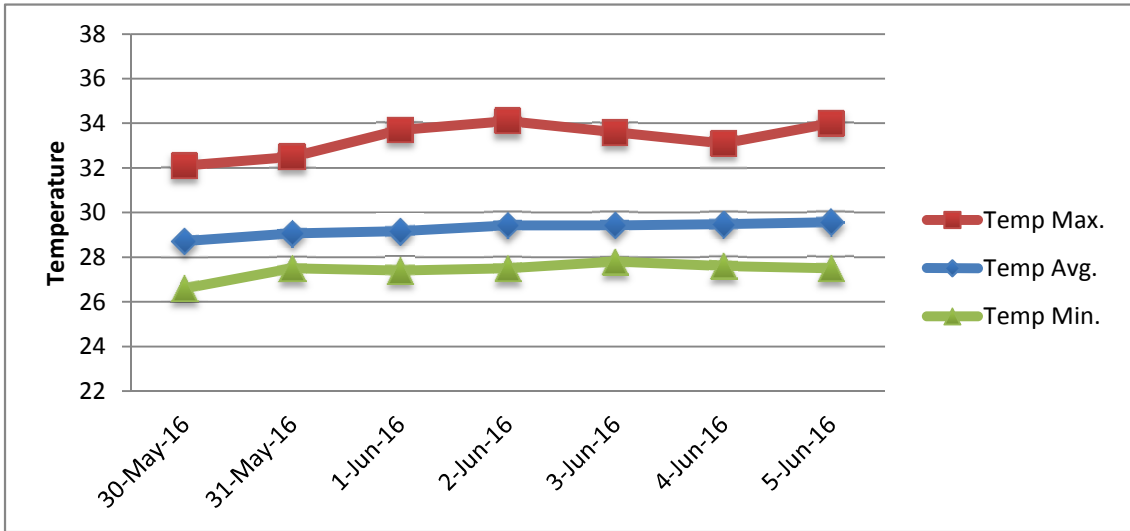
RAIN			DATE	TIME
Rainfall total	4.9	mm	-	-
Rainfall 24 hour's maximum	4.9	mm	5-Jun-16	-
Rainfall amount of days >= 1.0 mm	1		-	-
Rainfall cumulative	26.5	mm	-	-
TEMPERATURE				
Temperature weekly average	29.3	°C	-	-
Temperature weekly max. average	33.3	°C	-	-
Temperature absolute max.	34.1	°C	2-Jun-16	11:37
Temperature weekly min. average	27.4	°C	-	-
Temperature absolute min.	26.6	°C	30-May-16	3:21
Relative humidity weekly average	75.7	%	-	-
WIND				
Wind speed weekly average	14.0	kts	-	-
Wind speed average max.	27.4	kts	-	-
Wind speed absolute max.	32	kts	5-Jun-16	11:34
Wind vector weekly average	98	°	-	-
Wind energy potential total *	39,405	KWhr / m <sup>2</sup>	-	-
Wind energy weekly average *	5629	Whr / m <sup>2</sup> /day	-	-
Wind energy potential maximum *	6928	Whr / m <sup>2</sup> /day	1-Jun-16	-
Wind energy potential minimum *	3848	Whr / m <sup>2</sup> /day	4-Jun-16	-
EVAPORATION				
Evaporation daily average	9.43	mm	-	-
Evaporation weekly total	66.04	mm	-	-
Evaporation maximum	19.08	mm	3-Jun-16	-
SUNSHINE				
Sunshine duration weekly average	8 hrs	22 min	-	-
Sunshine absolute max.	10 hrs	18 min	5-Jun-16	-
Sunshine absolute min.	4 hrs	24 min	1-Jun-16	-
Solar radiation weekly average	5371	Whr / m <sup>2</sup> /day	-	-
Solar radiation absolute max.	6797	Whr / m <sup>2</sup> /day	-	-
Solar radiation absolute min.	3090	Whr / m <sup>2</sup> /day	-	-
REMARKS				

\* Wind energy at a height of 10 m for windspeeds of 4 m/s or more.

\_ Blank field - No data available



# METEOROLOGICAL DEPARTMENT CURAÇAO CLIMATOLOGICAL SUMMARY



# METEOROLOGICAL DEPARTMENT CURAÇAO CLIMATOLOGICAL SUMMARY

