

# METEOROLOGICAL DEPARTMENT CURAÇAO

## CLIMATOLOGICAL SUMMARY

**Week 35**

<b>Week Starting:</b>	24	Aug	2015
<b>Week Ending:</b>	30	Aug	2015

**Station: HATO, Airport**

RAIN			DATE	TIME
Rainfall total	0.0	mm	-	-
Rainfall 24 hour's maximum	0.0	mm	-	-
Rainfall amount of days $\geq 1.0$ mm	0		-	-
Hours with rainfall	0	hrs	-	-
Rainfall cumulative	166.8	mm	-	-
TEMPERATURE				
Temperature weekly average	29.5	°C	-	-
Temperature weekly max. average	33.3	°C	-	-
Temperature absolute max.	35.5	°C	28-Aug-15	12:06
Temperature weekly min. average	27.3	°C	-	-
Temperature absolute min.	26.3	°C	24-Aug-15	4:57
Relative humidity weekly average	77.1	%	-	-
WIND				
Wind speed weekly average	10.1	kts	-	-
Wind speed average max.	21.9	kts	-	-
Wind speed absolute max.	28	kts	30-Aug-15	15:57
Wind vector weekly average	104	°	-	-
Wind energy potential total *	17,360	KWhr / m <sup>2</sup>	-	-
Wind energy weekly average *	2893	Whr / m <sup>2</sup> /day	-	-
Wind energy potential maximum *	4635	Whr / m <sup>2</sup> /day	29-Aug-15	-
Wind energy potential minimum *	670	Whr / m <sup>2</sup> /day	26-Aug-15	-
EVAPORATION				
Evaporation daily average	9.80	mm	-	-
Evaporation weekly total	68.6	mm	-	-
Evaporation maximum	12.90	mm	26-Aug-15	-
SUNSHINE				
Sunshine duration weekly average	10 hrs	17 min	-	-
Sunshine absolute max.	11 hrs	0 min	24-Aug-15	-
Sunshine absolute min.	7 hrs	48 min	28-Aug-15	-
Solar radiation weekly average	-	Whr / m <sup>2</sup> /day	-	-
Solar radiation absolute max.	-	Whr / m <sup>2</sup> /day	-	-
Solar radiation absolute min.	-	Whr / m <sup>2</sup> /day	-	-
REMARKS				

\* Wind energy at a height of 10 m for windspeeds of 4 m/s or more.

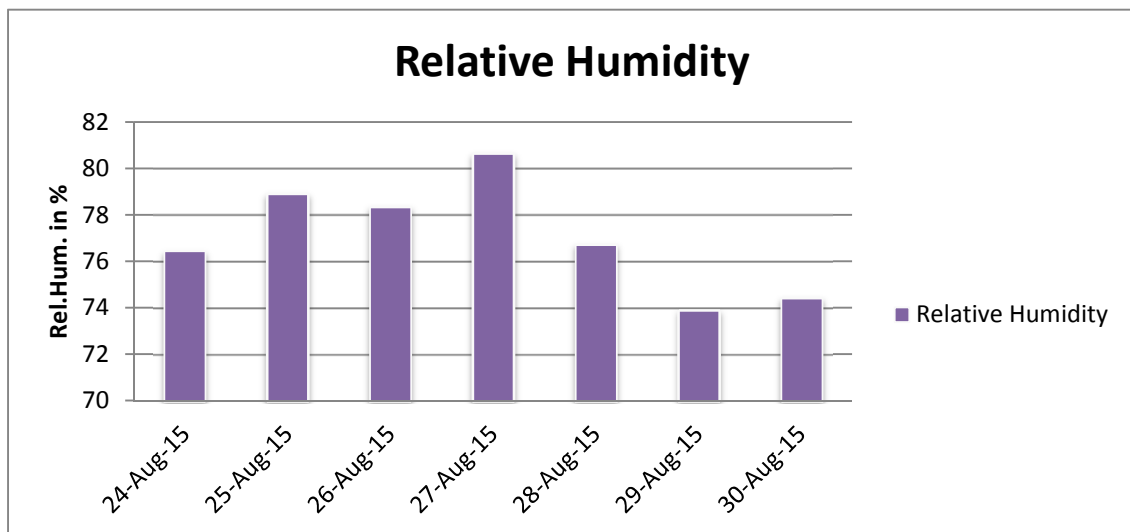
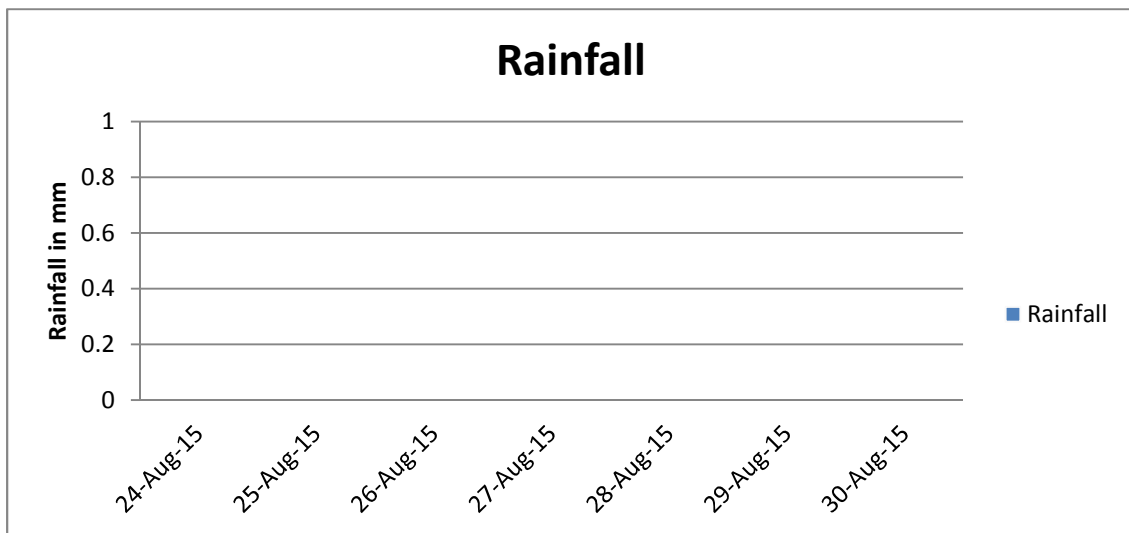
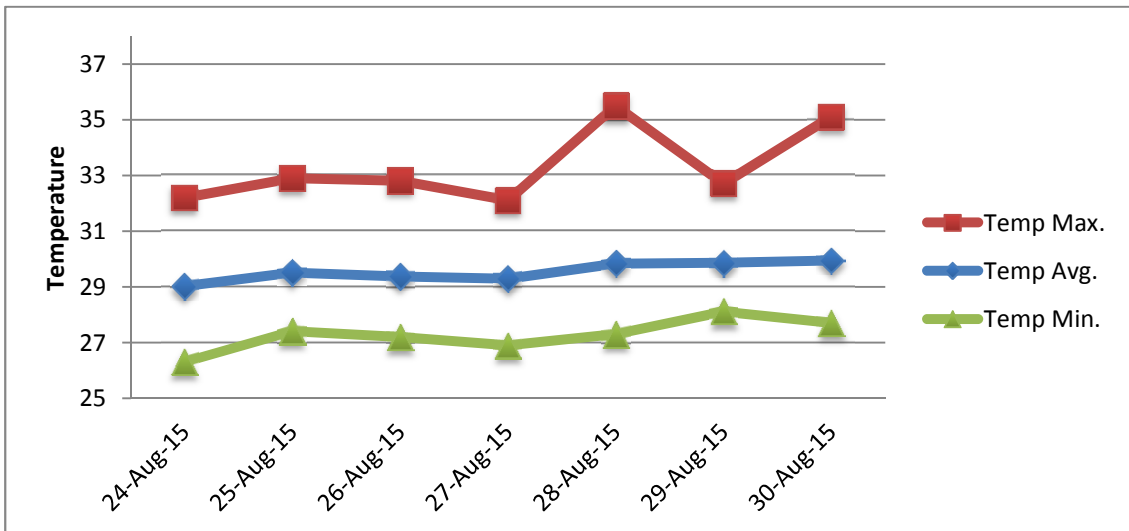
\*\* Extremes based on monthly data (30 years)

\*\*\* Sunshine duration in hrs (solar time)

\*\*\*\* Solar radiation (local time)



# METEOROLOGICAL DEPARTMENT CURAÇAO CLIMATOLOGICAL SUMMARY



# METEOROLOGICAL DEPARTMENT CURAÇAO CLIMATOLOGICAL SUMMARY

