

METEOROLOGICAL DEPARTMENT CURAÇAO CLIMATOLOGICAL SUMMARY

Week 35

Week Starting:	29-Aug	2016
Week Ending:	4-Sep	2016

Station: HATO, Airport

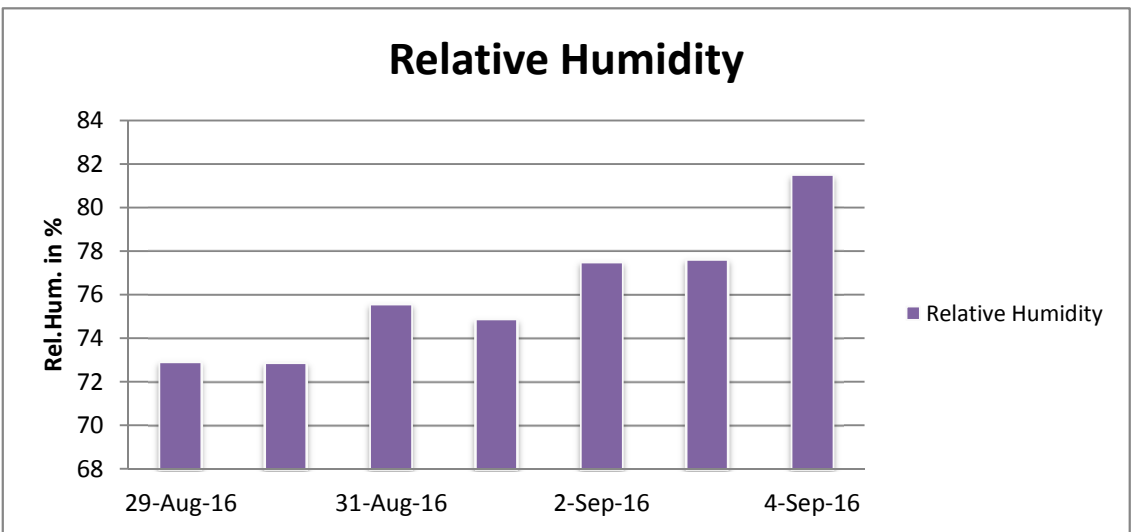
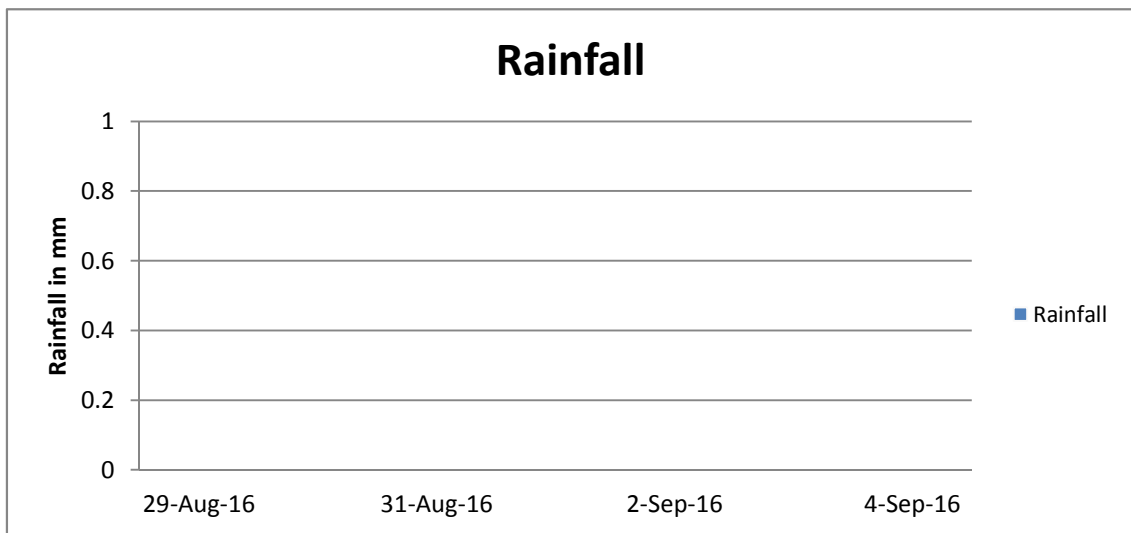
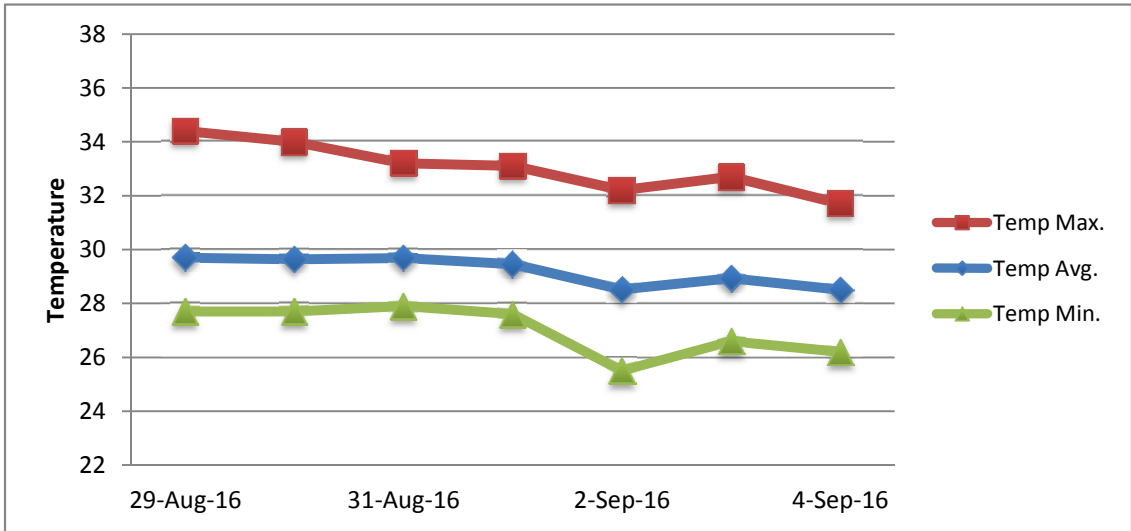
RAIN		DATE	TIME
Rainfall total	0.0 mm	-	-
Rainfall 24 hour's maximum	0.0 mm	-	-
Rainfall amount of days >= 1.0 mm	-	-	-
Rainfall cumulative	62.9 mm	-	-
TEMPERATURE			
Temperature weekly average	29.2 °C	-	-
Temperature weekly max. average	33.0 °C	-	-
Temperature absolute max.	34.4 °C	29-Aug-16	12:02
Temperature weekly min. average	27.0 °C	-	-
Temperature absolute min.	25.5 °C	2-Sep-16	2:19
Relative humidity weekly average	76.1 %	-	-
WIND			
Wind speed weekly average	11.6 kts	-	-
Wind speed average max.	26.0 kts	-	-
Wind speed absolute max.	32 kts	29-Aug-16	11:48
Wind vector weekly average	94 °	-	-
Wind energy potential total *	- KWhr / m ²	-	-
Wind energy weekly average *	- Whr / m ² / day	-	-
Wind energy potential maximum *	- Whr / m ² / day	29-Aug-16	-
Wind energy potential minimum *	1432 Whr / m ² / day	3-Sep-16	-
EVAPORATION			
Evaporation daily average	8.69 mm	-	-
Evaporation weekly total	60.845 mm	-	-
Evaporation maximum	11.70 mm	30-Aug-16	-
SUNSHINE			
Sunshine duration weekly average	8 hrs 28 min	-	-
Sunshine absolute max.	10 hrs 36 min	30-Aug-16	-
Sunshine absolute min.	6 hrs 24 min	3-Sep-16	-
Solar radiation weekly average	5661 Whr / m ² / day	-	-
Solar radiation absolute max.	7147 Whr / m ² / day	-	-
Solar radiation absolute min.	4399 Whr / m ² / day	-	-
REMARKS			

* Wind energy at a height of 10 m for windspeeds of 4 m/s or more.

_ Blank field - No data available



METEOROLOGICAL DEPARTMENT CURAÇAO CLIMATOLOGICAL SUMMARY



METEOROLOGICAL DEPARTMENT CURAÇAO CLIMATOLOGICAL SUMMARY

