

# METEOROLOGICAL DEPARTMENT CURAÇAO CLIMATOLOGICAL SUMMARY

**Week 36**

<b>Week Starting:</b>	31-Aug	2015
<b>Week Ending:</b>	6-Sep	2015

**Station: HATO, Airport**

RAIN			DATE	TIME
Rainfall total	0.5	mm	-	-
Rainfall 24 hour's maximum	0.3	mm	-	-
Rainfall amount of days >= 1.0 mm	0		-	-
Rainfall cumulative	167.3	mm	-	-
TEMPERATURE				
Temperature weekly average	29.8	°C	-	-
Temperature weekly max. average	34.1	°C	-	-
Temperature absolute max.	35.1	°C	3-Sep-15	11:05
Temperature weekly min. average	27.6	°C	-	-
Temperature absolute min.	26.0	°C	3-Sep-15	3:09
Relative humidity weekly average	74.2	%	-	-
WIND				
Wind speed weekly average	12.2	kts	-	-
Wind speed average max.	26.6	kts	-	-
Wind speed absolute max.	31	kts	3-Sep-15	10:29
Wind vector weekly average	106	°	-	-
Wind energy potential total *	26,159	KWhr / m <sup>2</sup>	-	-
Wind energy weekly average *	3737	Whr / m <sup>2</sup> /day	-	-
Wind energy potential maximum *	4719	Whr / m <sup>2</sup> /day	3-Sep-15	-
Wind energy potential minimum *	2584	Whr / m <sup>2</sup> /day	1-Sep-15	-
EVAPORATION				
Evaporation daily average	9.41	mm	-	-
Evaporation weekly total	65.9	mm	-	-
Evaporation maximum	11.05	mm	1-Sep-15	-
SUNSHINE				
Sunshine duration weekly average	10 hrs	24 min	-	-
Sunshine absolute max.	11 hrs	0 min	31-Aug-15	-
Sunshine absolute min.	9 hrs	36 min	6-Sep-15	-
Solar radiation weekly average	-	Whr / m <sup>2</sup> /day	-	-
Solar radiation absolute max.	-	Whr / m <sup>2</sup> /day	-	-
Solar radiation absolute min.	-	Whr / m <sup>2</sup> /day	-	-
REMARKS				

\* Wind energy at a height of 10 m for windspeeds of 4 m/s or more.

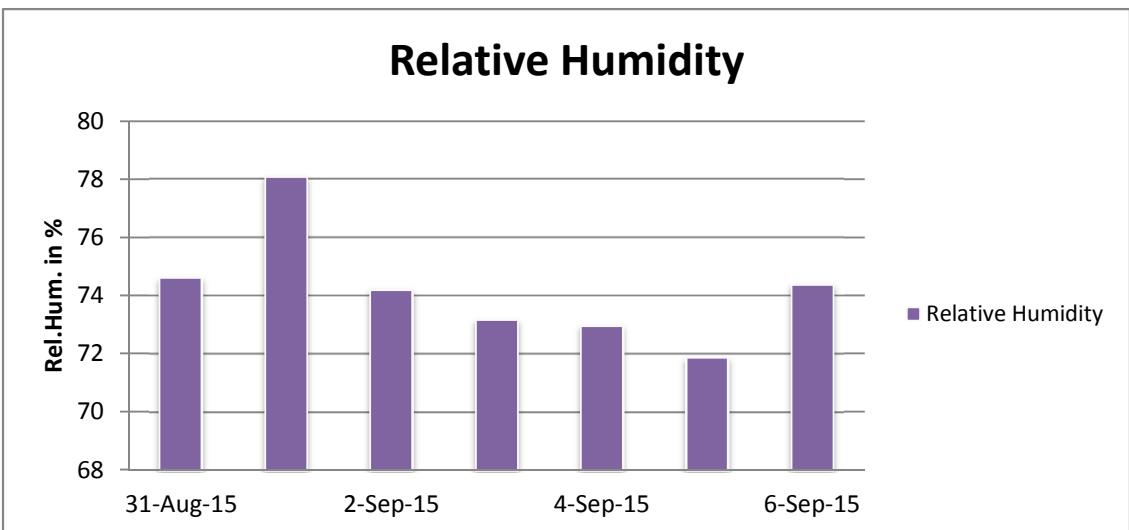
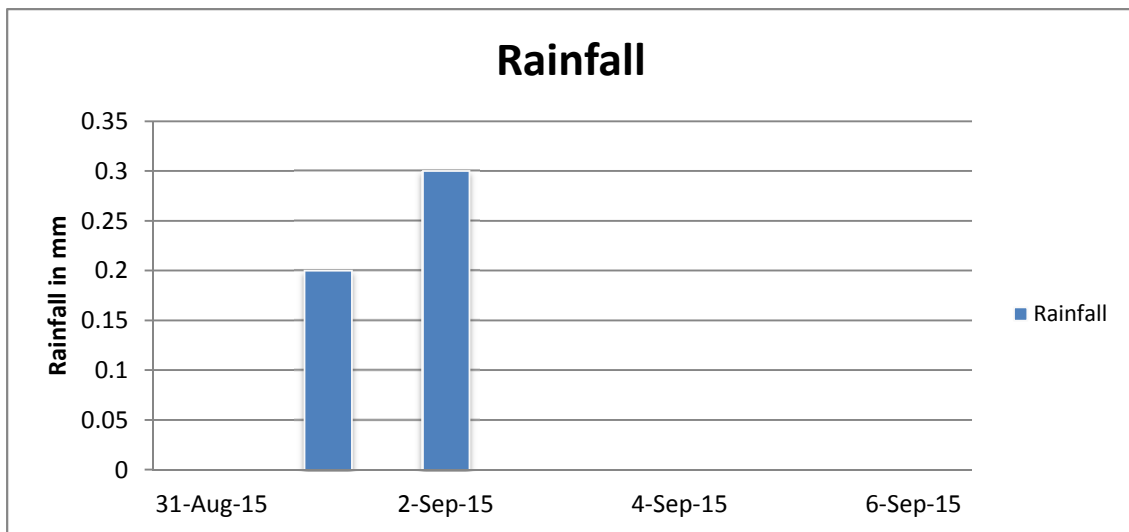
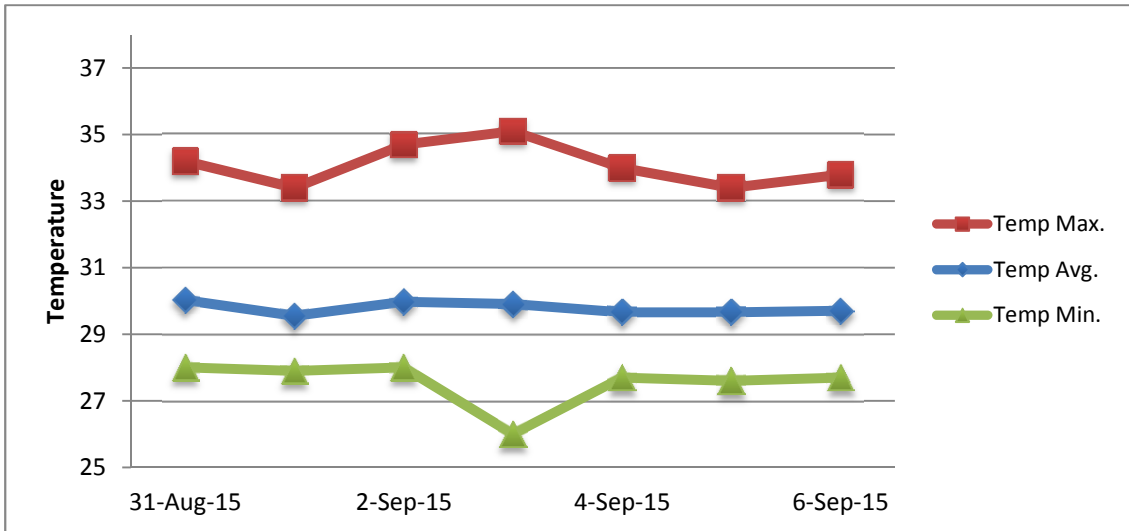
\*\* Extremes based on monthly data (30 years)

\*\*\* Sunshine duration in hrs (solar time)

\*\*\*\* Solar radiation (local time)



# METEOROLOGICAL DEPARTMENT CURAÇAO CLIMATOLOGICAL SUMMARY



# METEOROLOGICAL DEPARTMENT CURAÇAO CLIMATOLOGICAL SUMMARY

