

METEOROLOGICAL DEPARTMENT CURAÇAO CLIMATOLOGICAL SUMMARY

Week 37

Week Starting:	7-Sep	2015
Week Ending:	13-Sep	2015

Station: HATO, Airport

RAIN			DATE	TIME
Rainfall total	4.7	mm	-	-
Rainfall 24 hour's maximum	3.8	mm	9-Sep-15	-
Rainfall amount of days \geq 1.0 mm	1		-	-
Rainfall cumulative	172.0	mm	-	-
TEMPERATURE				
Temperature weekly average	29.6	°C	-	-
Temperature weekly max. average	33.4	°C	-	-
Temperature absolute max.	35.7	°C	12-Sep-15	13:34
Temperature weekly min. average	27.6	°C	-	-
Temperature absolute min.	26.9	°C	8-Sep-15	4:49
Relative humidity weekly average	75.9	%	-	-
WIND				
Wind speed weekly average	11.7	kts	-	-
Wind speed average max.	23.7	kts	-	-
Wind speed absolute max.	27	kts	10-Sep-15	13:30
Wind vector weekly average	102	°	-	-
Wind energy potential total *	22,892	KWhr / m ²	-	-
Wind energy weekly average *	3270	Whr / m ² /day	-	-
Wind energy potential maximum *	4638	Whr / m ² /day	13-Sep-15	-
Wind energy potential minimum *	2119	Whr / m ² /day	11-Sep-15	-
EVAPORATION				
Evaporation daily average	8.45	mm	-	-
Evaporation weekly total	59.12	mm	-	-
Evaporation maximum	12.98	mm	13-Sep-15	-
SUNSHINE				
Sunshine duration weekly average	8 hrs	25 min	-	-
Sunshine absolute max.	11 hrs	6 min	13-Sep-15	-
Sunshine absolute min.	3 hrs	48 min	11-Sep-15	-
Solar radiation weekly average	-	Whr / m ² /day	-	-
Solar radiation absolute max.	-	Whr / m ² /day	-	-
Solar radiation absolute min.	-	Whr / m ² /day	-	-
REMARKS				

* Wind energy at a height of 10 m for windspeeds of 4 m/s or more.

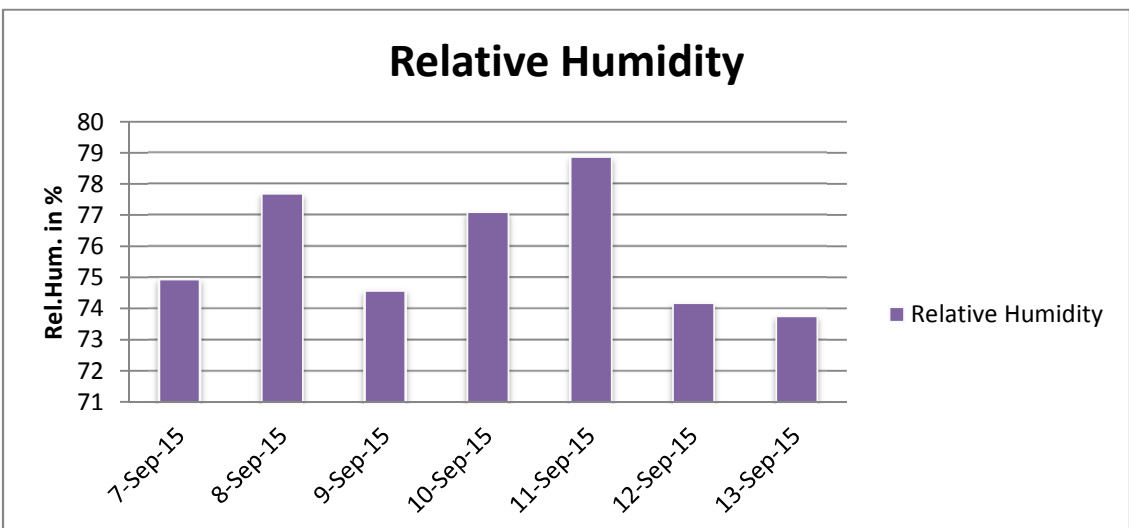
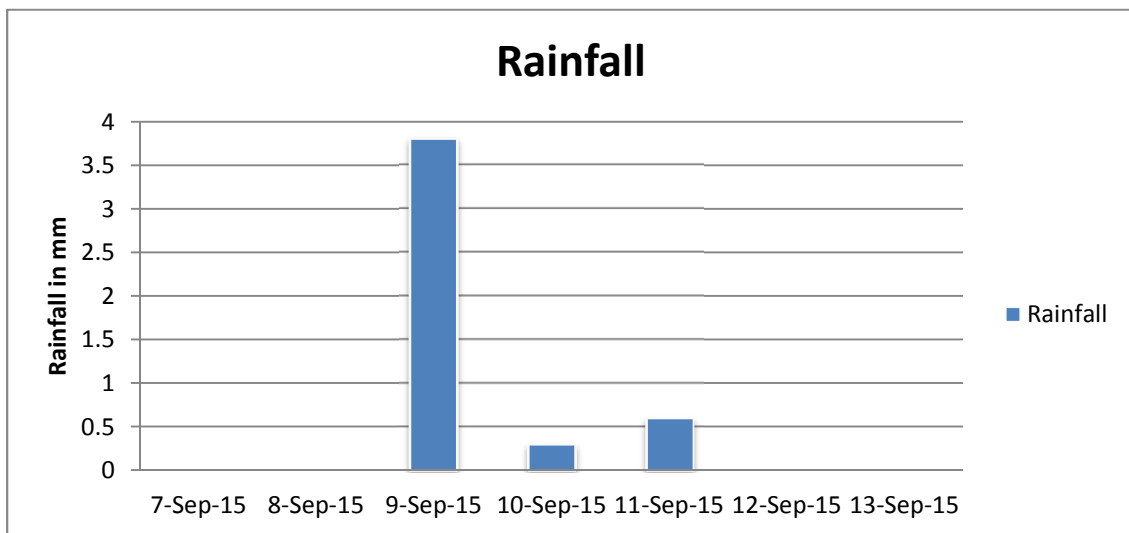
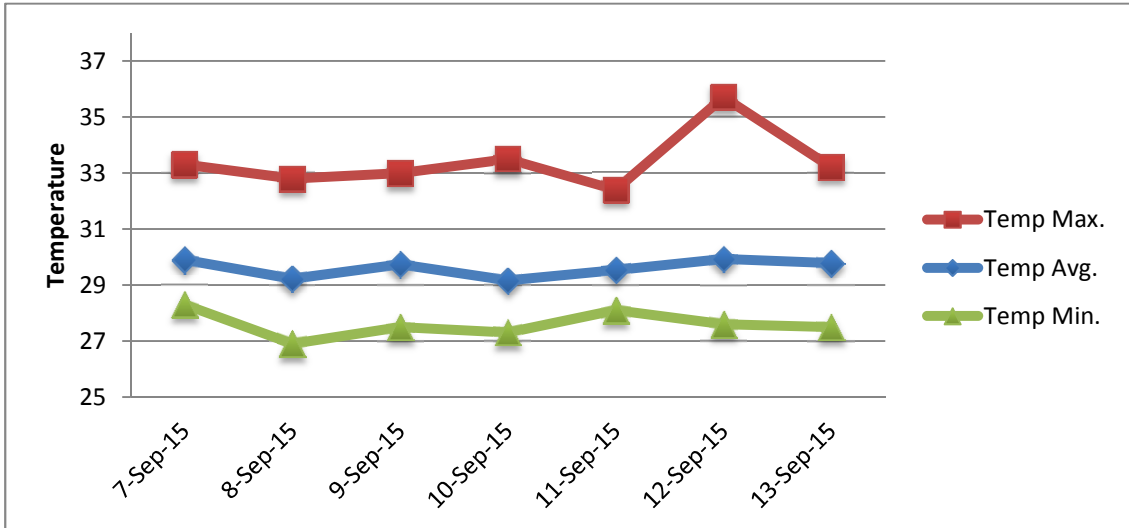
** Extremes based on monthly data (30 years)

*** Sunshine duration in hrs (solar time)

**** Solar radiation (local time)



METEOROLOGICAL DEPARTMENT CURAÇAO CLIMATOLOGICAL SUMMARY



METEOROLOGICAL DEPARTMENT CURAÇAO CLIMATOLOGICAL SUMMARY

