

METEOROLOGICAL DEPARTMENT CURAÇAO CLIMATOLOGICAL SUMMARY

Week 39

Week Starting:	21-Sep	2015
Week Ending:	27-Sep	2015

Station: HATO, Airport

RAIN			DATE	TIME
Rainfall total	0.0	mm	-	-
Rainfall 24 hour's maximum	0.0	mm	-	-
Rainfall amount of days >= 1.0 mm	-		-	-
Rainfall cumulative	177.0	mm	-	-
TEMPERATURE				
Temperature weekly average	30.0	°C	-	-
Temperature weekly max. average	33.7	°C	-	-
Temperature absolute max.	35.4	°C	26-Sep-15	12:37
Temperature weekly min. average	28.1	°C	-	-
Temperature absolute min.	27.7	°C	26-Sep-15	2:52
Relative humidity weekly average	76.5	%	-	-
WIND				
Wind speed weekly average	11.8	kts	-	-
Wind speed average max.	22.4	kts	-	-
Wind speed absolute max.	24	kts	22-Sep-15	9:52
Wind vector weekly average	103	°	-	-
Wind energy potential total *	23,345	KWhr / m ²	-	-
Wind energy weekly average *	3335	Whr / m ² / day	-	-
Wind energy potential maximum *	3770	Whr / m ² / day	22-Sep-15	-
Wind energy potential minimum *	2810	Whr / m ² / day	23-Sep-15	-
EVAPORATION				
Evaporation daily average	10.89	mm	-	-
Evaporation weekly total	76.24	mm	-	-
Evaporation maximum	12.58	mm	23-Sep-15	-
SUNSHINE				
Sunshine duration weekly average	10 hrs	27 min	-	-
Sunshine absolute max.	10 hrs	48 min	26-Sep-15	-
Sunshine absolute min.	9 hrs	54 min	27-Sep-15	-
Solar radiation weekly average	-	Whr / m ² / day	-	-
Solar radiation absolute max.	-	Whr / m ² / day	-	-
Solar radiation absolute min.	-	Whr / m ² / day	-	-
REMARKS				

* Wind energy at a height of 10 m for windspeeds of 4 m/s or more.

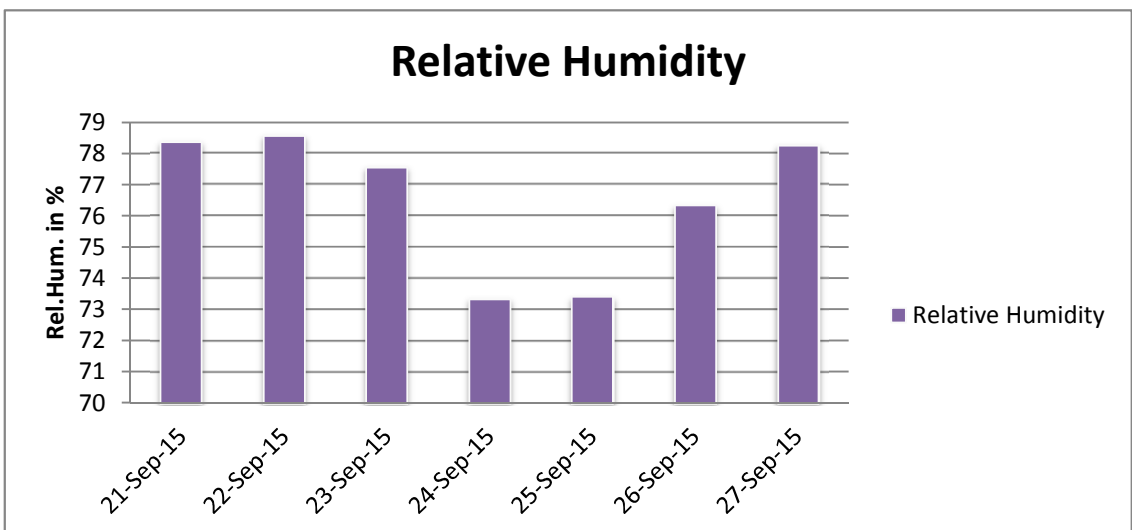
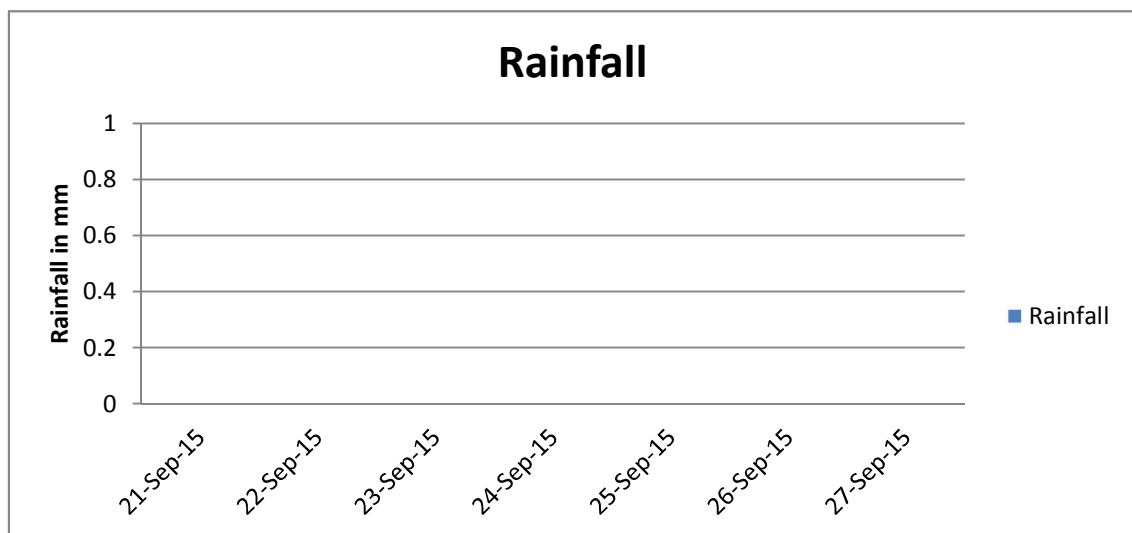
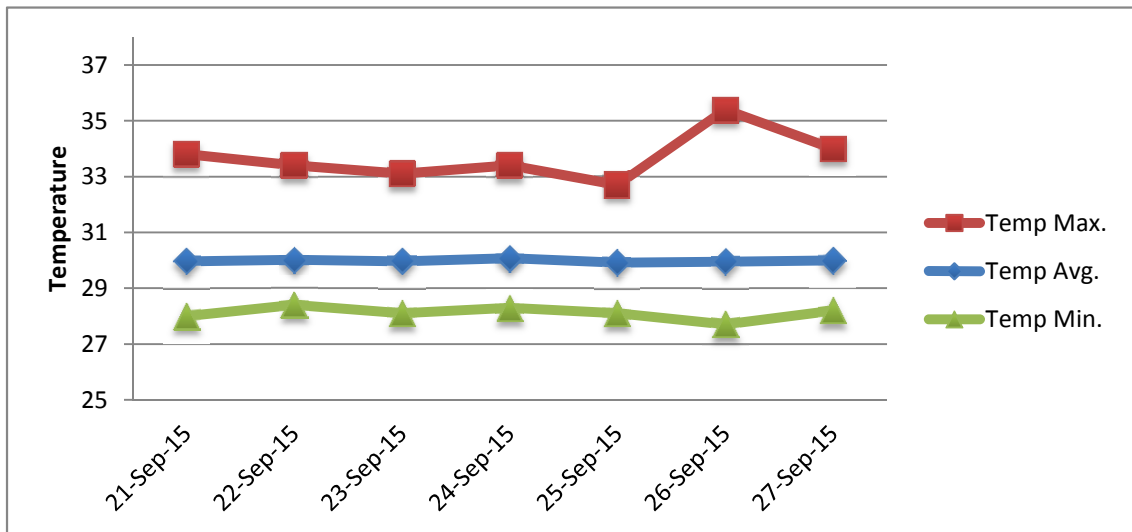
** Extremes based on monthly data (30 years)

*** Sunshine duration in hrs (solar time)

**** Solar radiation (local time)



METEOROLOGICAL DEPARTMENT CURAÇAO CLIMATOLOGICAL SUMMARY



METEOROLOGICAL DEPARTMENT CURAÇAO CLIMATOLOGICAL SUMMARY

