

METEOROLOGICAL DEPARTMENT CURAÇAO CLIMATOLOGICAL SUMMARY

Week 40

Week Starting:	28-Sep	2015
Week Ending:	4-Oct	2015

Station: HATO, Airport

RAIN			DATE	TIME
Rainfall total	3.1	mm	-	-
Rainfall 24 hour's maximum	3.0	mm	2-Oct-15	-
Rainfall amount of days >= 1.0 mm	-		-	-
Rainfall cumulative	180.1	mm	-	-
TEMPERATURE				
Temperature weekly average	29.6	°C	-	-
Temperature weekly max. average	33.7	°C	-	-
Temperature absolute max.	35.4	°C	4-Oct-15	12:56
Temperature weekly min. average	27.1	°C	-	-
Temperature absolute min.	25.0	°C	2-Oct-15	8:31
Relative humidity weekly average	76.4	%	-	-
WIND				
Wind speed weekly average	9.0	kts	-	-
Wind speed average max.	19.3	kts	-	-
Wind speed absolute max.	22	kts	28-Sep-15	13:28
Wind vector weekly average	103	°	-	-
Wind energy potential total *	12,508	KWhr / m ²	-	-
Wind energy weekly average *	2085	Whr / m ² / day	-	-
Wind energy potential maximum *	3187	Whr / m ² / day	29-Sep-15	-
Wind energy potential minimum *	614	Whr / m ² / day	1-Oct-15	-
EVAPORATION				
Evaporation daily average	12.37	mm	-	-
Evaporation weekly total	61.86	mm	-	-
Evaporation maximum	20.90	mm	1-Oct-15	-
SUNSHINE				
Sunshine duration weekly average	9 hrs	23 min	-	-
Sunshine absolute max.	10 hrs	42 min	28-Sep-15	-
Sunshine absolute min.	0 hrs	42 min	2-Oct-15	-
Solar radiation weekly average	-	Whr / m ² / day	-	-
Solar radiation absolute max.	-	Whr / m ² / day	-	-
Solar radiation absolute min.	-	Whr / m ² / day	-	-
REMARKS				

* Wind energy at a height of 10 m for windspeeds of 4 m/s or more.

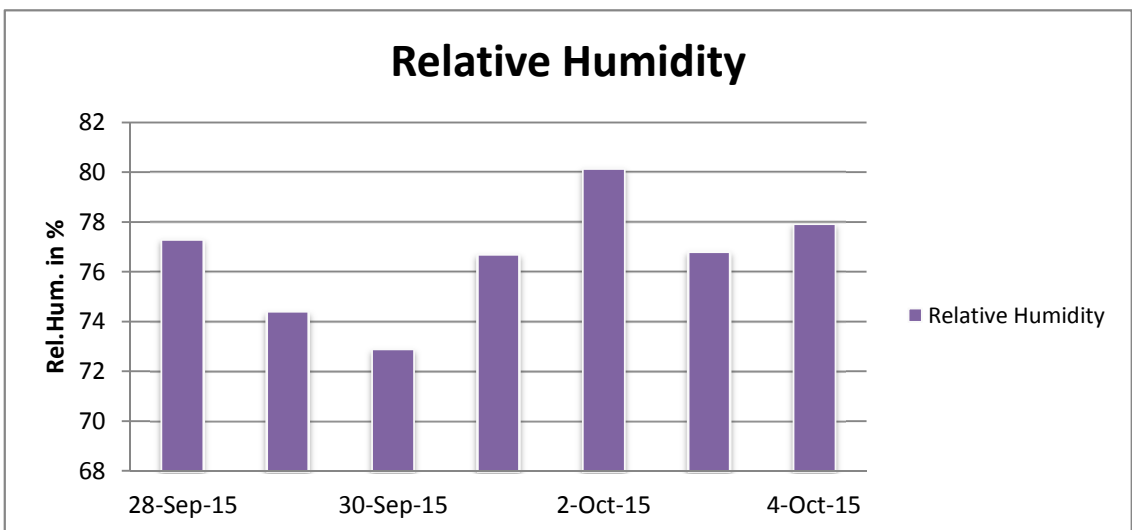
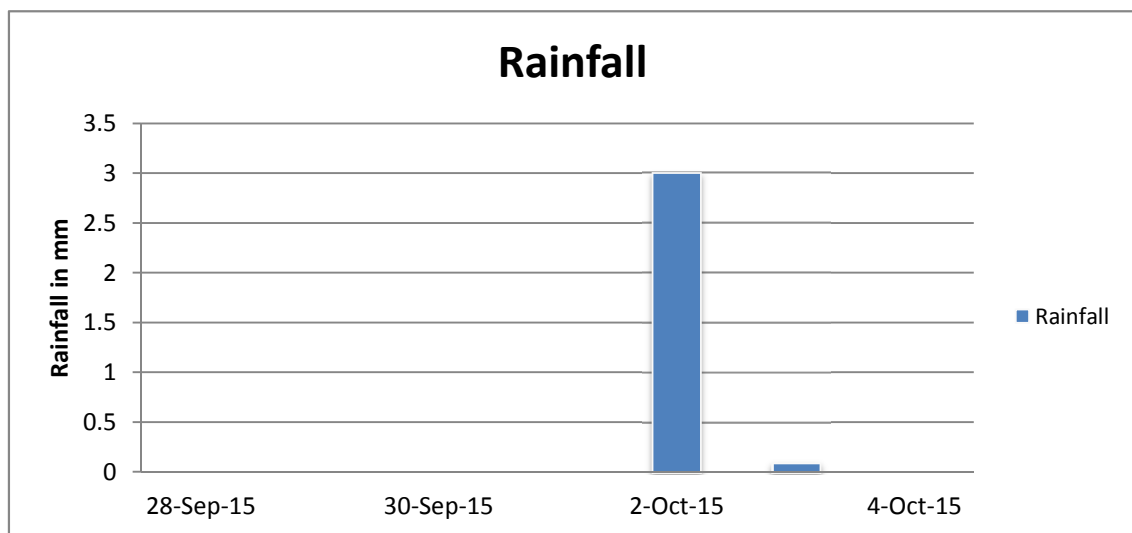
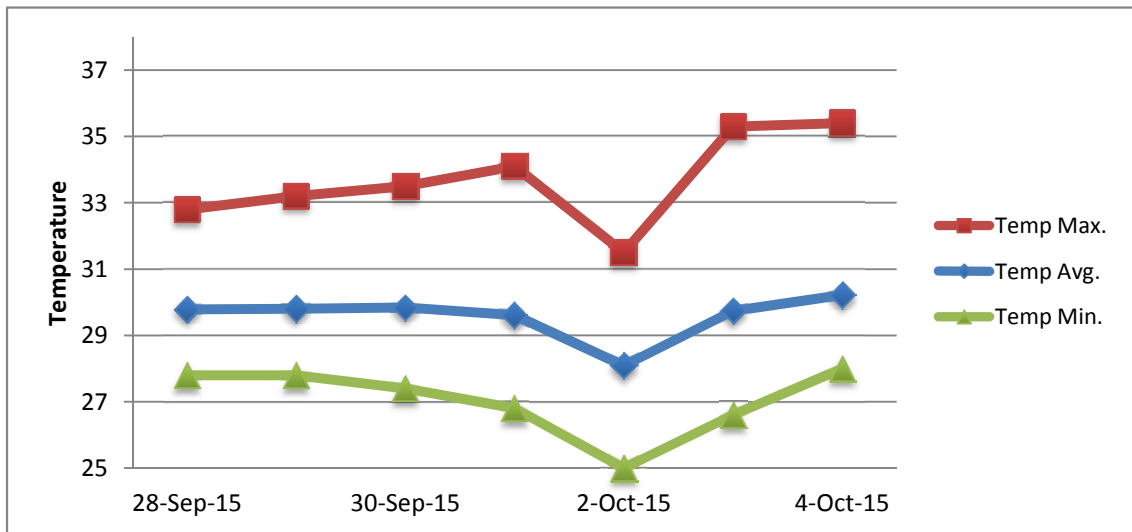
** Extremes based on monthly data (30 years)

*** Sunshine duration in hrs (solar time)

**** Solar radiation (local time)



METEOROLOGICAL DEPARTMENT CURAÇAO CLIMATOLOGICAL SUMMARY



METEOROLOGICAL DEPARTMENT CURAÇAO CLIMATOLOGICAL SUMMARY

