

METEOROLOGICAL DEPARTMENT CURAÇAO CLIMATOLOGICAL SUMMARY

Week 41

Week Starting:	10-Oct	2016
Week Ending:	16-Oct	2016

Station: HATO, Airport

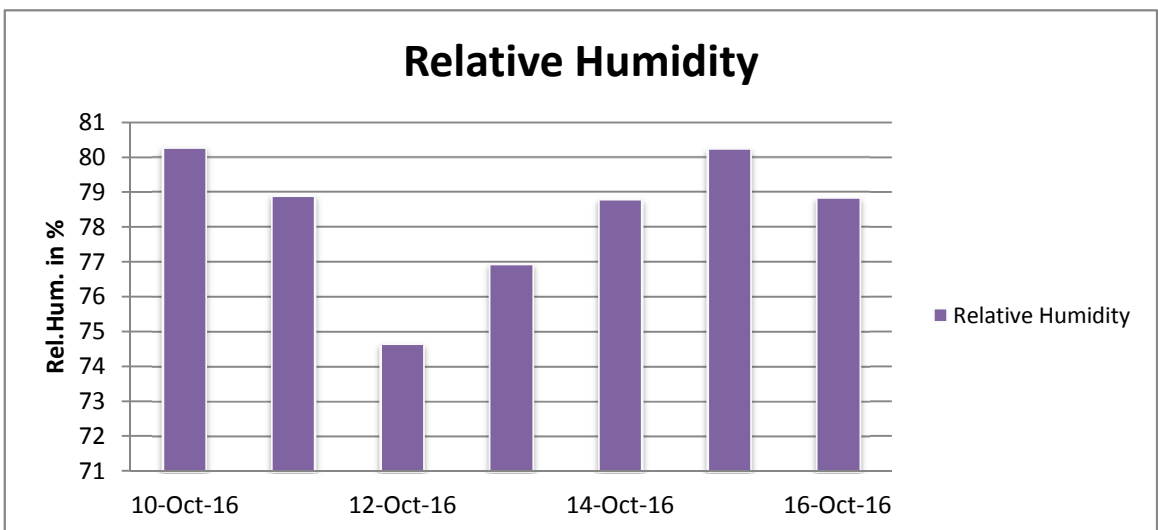
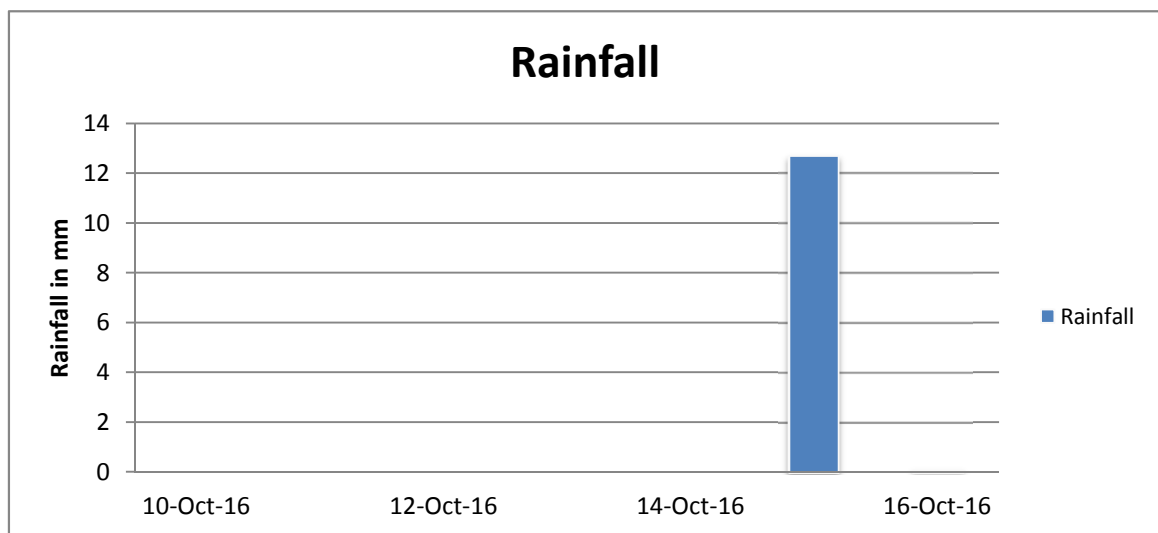
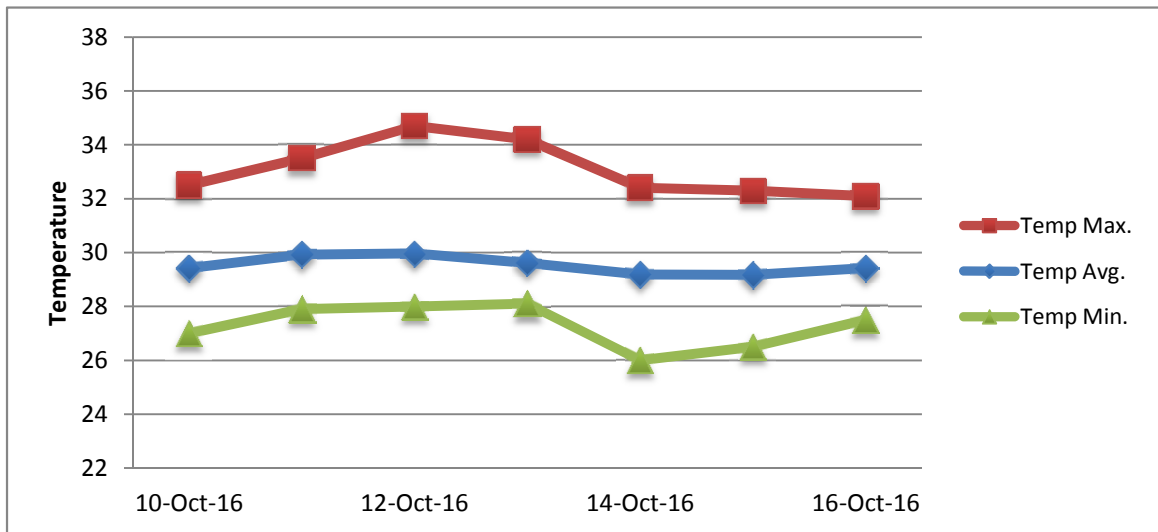
RAIN			DATE	TIME
Rainfall total	12.8	mm	-	-
Rainfall 24 hour's maximum	12.7	mm	15-Oct-16	-
Rainfall amount of days >= 1.0 mm	1		-	-
Rainfall cumulative	130.4	mm	-	-
TEMPERATURE				
Temperature weekly average	29.5	°C	-	-
Temperature weekly max. average	33.1	°C	-	-
Temperature absolute max.	34.7	°C	12-Oct-16	12:43
Temperature weekly min. average	27.3	°C	-	-
Temperature absolute min.	26.0	°C	14-Oct-16	23:31
Relative humidity weekly average	78.4	%	-	-
WIND				
Wind speed weekly average	10.6	kts	-	-
Wind speed average max.	22.0	kts	-	-
Wind speed absolute max.	27	kts	14-Oct-16	10:06
Wind vector weekly average	95	°	-	-
Wind energy potential total *	17,920	KWhr / m ²	-	-
Wind energy weekly average *	2560	Whr / m ² /day	-	-
Wind energy potential maximum *	3352	Whr / m ² /day	12-Oct-16	-
Wind energy potential minimum *	1205	Whr / m ² /day	10-Oct-16	-
EVAPORATION				
Evaporation daily average	7.32	mm	-	-
Evaporation weekly total	51.27	mm	-	-
Evaporation maximum	9.29	mm	11-Oct-16	-
SUNSHINE				
Sunshine duration weekly average	9 hrs	28 min	-	-
Sunshine absolute max.	10 hrs	42 min	11-Oct-16	-
Sunshine absolute min.	6 hrs	30 min	14-Oct-16	-
Solar radiation weekly average	5355	Whr / m ² /day	-	-
Solar radiation absolute max.	6272	Whr / m ² /day	-	-
Solar radiation absolute min.	4522	Whr / m ² /day	-	-
REMARKS				

* Wind energy at a height of 10 m for windspeeds of 4 m/s or more.

_ Blank field - No data available



METEOROLOGICAL DEPARTMENT CURAÇAO CLIMATOLOGICAL SUMMARY



METEOROLOGICAL DEPARTMENT CURAÇAO CLIMATOLOGICAL SUMMARY

