

METEOROLOGICAL DEPARTMENT CURAÇAO CLIMATOLOGICAL SUMMARY

Week 42

Week Starting:	12-Oct	2015
Week Ending:	18-Oct	2015

Station: HATO, Airport

RAIN			DATE	TIME
Rainfall total	0.0	mm	-	-
Rainfall 24 hour's maximum	0.0	mm	-	-
Rainfall amount of days >= 1.0 mm	-		-	-
Rainfall cumulative	180.1	mm	-	-
TEMPERATURE				
Temperature weekly average	29.4	°C	-	-
Temperature weekly max. average	33.2	°C	-	-
Temperature absolute max.	34.9	°C	14-Oct-15	12:12
Temperature weekly min. average	27.4	°C	-	-
Temperature absolute min.	27.0	°C	16-Oct-15	4:53
Relative humidity weekly average	76.8	%	-	-
WIND				
Wind speed weekly average	12.8	kts	-	-
Wind speed average max.	25.4	kts	-	-
Wind speed absolute max.	27	kts	14-Oct-15	12:14
Wind vector weekly average	115	°	-	-
Wind energy potential total *	31,598	KWhr / m ²	-	-
Wind energy weekly average *	4514	Whr / m ² /day	-	-
Wind energy potential maximum *	5791	Whr / m ² /day	12-Oct-15	-
Wind energy potential minimum *	3592	Whr / m ² /day	18-Oct-15	-
EVAPORATION				
Evaporation daily average	9.48	mm	-	-
Evaporation weekly total	66.37	mm	-	-
Evaporation maximum	12.32	mm	15-Oct-15	-
SUNSHINE				
Sunshine duration weekly average	9 hrs	22 min	-	-
Sunshine absolute max.	11 hrs	0 min	15-Oct-15	-
Sunshine absolute min.	8 hrs	18 min	12-Oct-15	-
Solar radiation weekly average	-	Whr / m ² /day	-	-
Solar radiation absolute max.	-	Whr / m ² /day	-	-
Solar radiation absolute min.	-	Whr / m ² /day	-	-
REMARKS				

* Wind energy at a height of 10 m for windspeeds of 4 m/s or more.

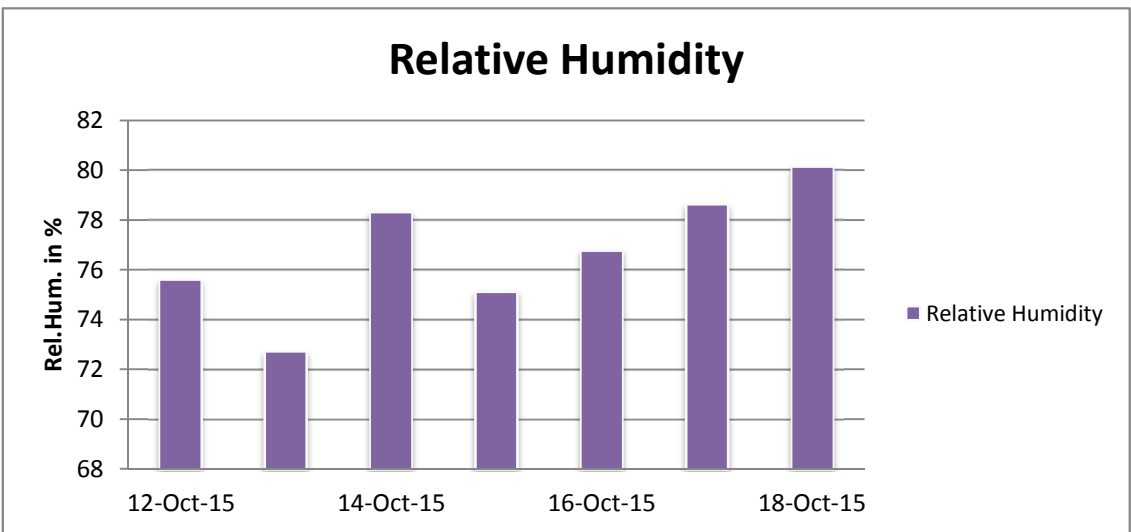
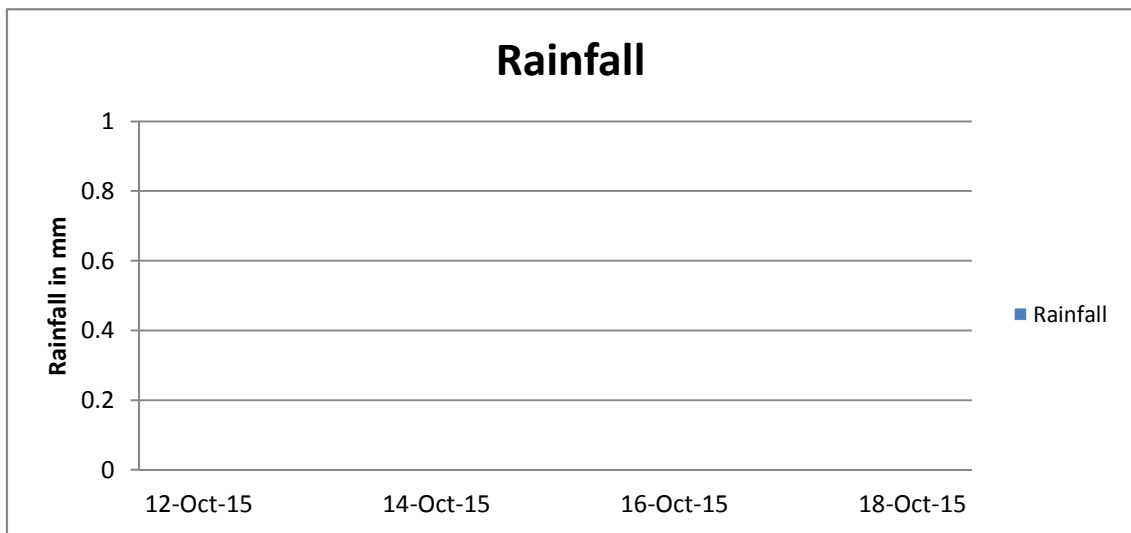
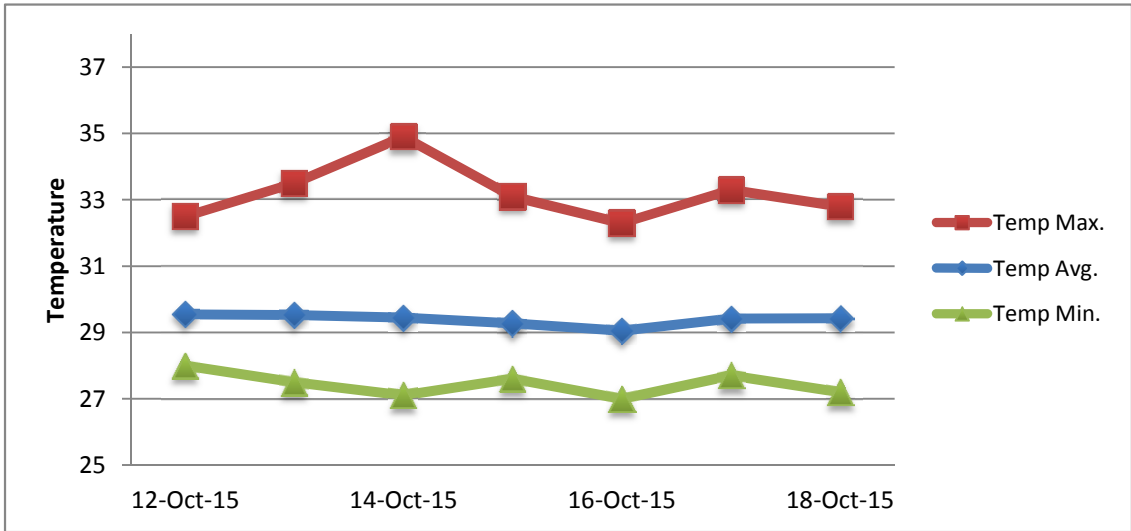
** Extremes based on monthly data (30 years)

*** Sunshine duration in hrs (solar time)

**** Solar radiation (local time)



METEOROLOGICAL DEPARTMENT CURAÇAO CLIMATOLOGICAL SUMMARY



METEOROLOGICAL DEPARTMENT CURAÇAO CLIMATOLOGICAL SUMMARY

