

METEOROLOGICAL DEPARTMENT CURAÇAO CLIMATOLOGICAL SUMMARY

Week 43

Week Starting:	19-Oct	2015
Week Ending:	25-Oct	2015

Station: HATO, Airport

RAIN			DATE	TIME
Rainfall total	17.3	mm	-	-
Rainfall 24 hour's maximum	17.3	mm	24-Oct-15	-
Rainfall amount of days >= 1.0 mm	1		-	-
Rainfall cumulative	197.4	mm	-	-
TEMPERATURE				
Temperature weekly average	29.3	°C	-	-
Temperature weekly max. average	32.8	°C	-	-
Temperature absolute max.	35.2	°C	25-Oct-15	13:12
Temperature weekly min. average	27.1	°C	-	-
Temperature absolute min.	24.9	°C	24-Oct-15	2:18
Relative humidity weekly average	79.6	%	-	-
WIND				
Wind speed weekly average	11.4	kts	-	-
Wind speed average max.	22.6	kts	-	-
Wind speed absolute max.	26	kts	20-Oct-15	20:10
Wind vector weekly average	115	°	-	-
Wind energy potential total *	22,377	KWhr / m ²	-	-
Wind energy weekly average *	3197	Whr / m ² /day	-	-
Wind energy potential maximum *	5496	Whr / m ² /day	20-Oct-15	-
Wind energy potential minimum *	1396	Whr / m ² /day	25-Oct-15	-
EVAPORATION				
Evaporation daily average	7.44	mm	-	-
Evaporation weekly total	52.11	mm	-	-
Evaporation maximum	10.05	mm	24-Oct-15	-
SUNSHINE				
Sunshine duration weekly average	9 hrs	27 min	-	-
Sunshine absolute max.	10 hrs	42 min	19-Oct-15	-
Sunshine absolute min.	5 hrs	6 min	25-Oct-15	-
Solar radiation weekly average	-	Whr / m ² /day	-	-
Solar radiation absolute max.	-	Whr / m ² /day	-	-
Solar radiation absolute min.	-	Whr / m ² /day	-	-
REMARKS				

* Wind energy at a height of 10 m for windspeeds of 4 m/s or more.

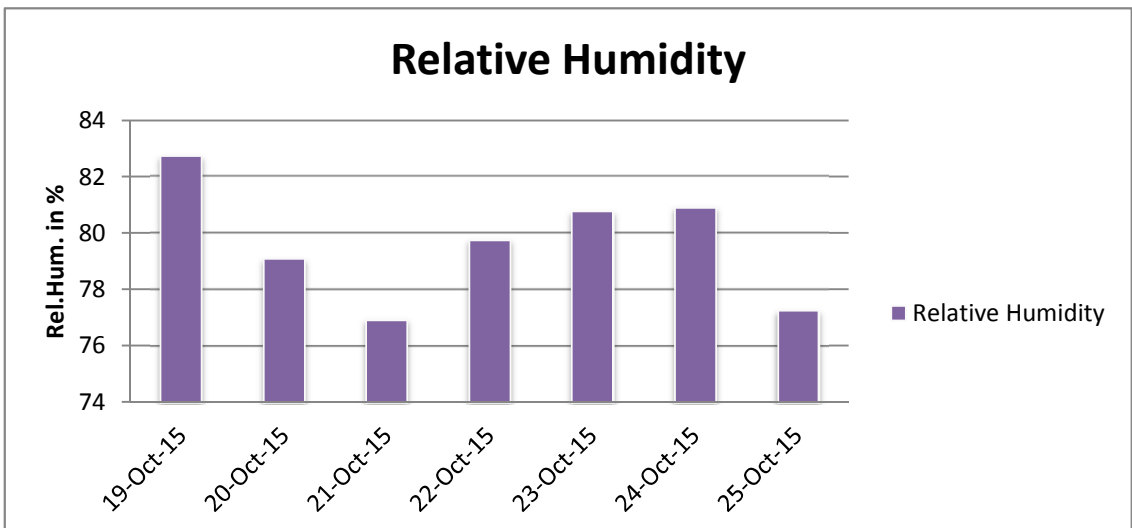
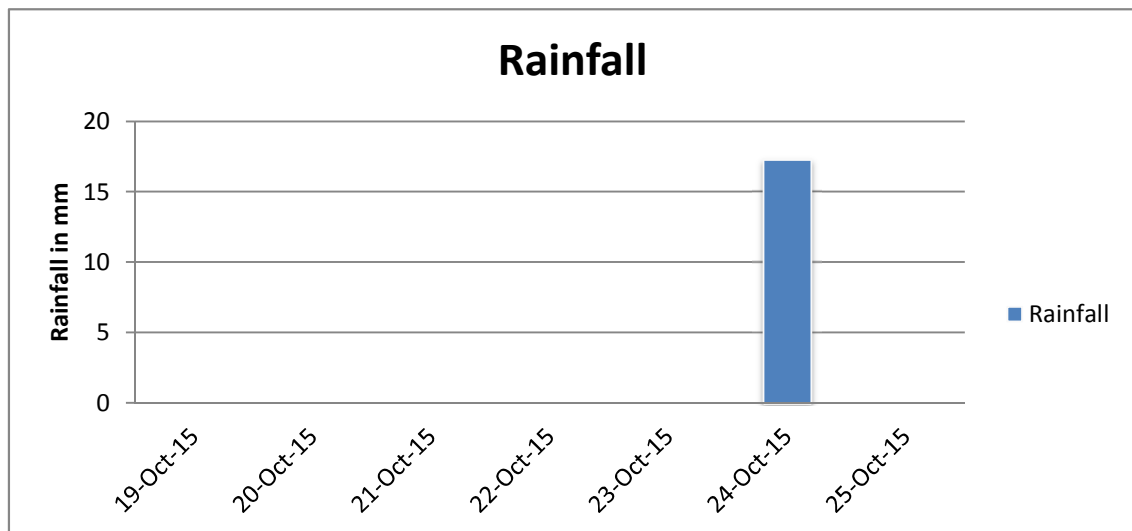
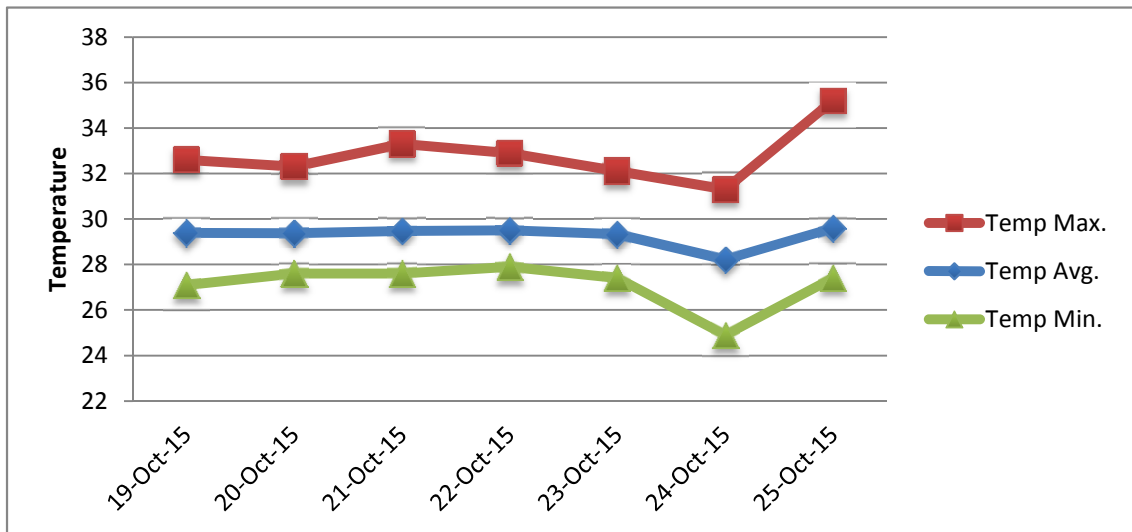
** Extremes based on monthly data (30 years)

*** Sunshine duration in hrs (solar time)

**** Solar radiation (local time)



METEOROLOGICAL DEPARTMENT CURAÇAO CLIMATOLOGICAL SUMMARY



METEOROLOGICAL DEPARTMENT CURAÇAO CLIMATOLOGICAL SUMMARY

