

METEOROLOGICAL DEPARTMENT CURAÇAO CLIMATOLOGICAL SUMMARY

Week 44

Week Starting:	26-Oct	2015
Week Ending:	1-Nov	2015

Station: HATO, Airport

RAIN			DATE	TIME
Rainfall total	7.8	mm	-	-
Rainfall 24 hour's maximum	4.2	mm	28-Oct-15	-
Rainfall amount of days >= 1.0 mm	2		-	-
Rainfall cumulative	205.2	mm	-	-
TEMPERATURE				
Temperature weekly average	28.7	°C	-	-
Temperature weekly max. average	31.9	°C	-	-
Temperature absolute max.	32.6	°C	29-Oct-15	14:05
Temperature weekly min. average	26.2	°C	-	-
Temperature absolute min.	24.1	°C	27-Oct-15	10:16
Relative humidity weekly average	82.0	%	-	-
WIND				
Wind speed weekly average	9.3	kts	-	-
Wind speed average max.	19.3	kts	-	-
Wind speed absolute max.	24	kts	27-Oct-15	10:38
Wind vector weekly average	115	°	-	-
Wind energy potential total *	11,324	KWhr / m ²	-	-
Wind energy weekly average *	1618	Whr / m ² / day	-	-
Wind energy potential maximum *	2408	Whr / m ² / day	27-Oct-15	-
Wind energy potential minimum *	760	Whr / m ² / day	30-Oct-15	-
EVAPORATION				
Evaporation daily average	5.97	mm	-	-
Evaporation weekly total	41.8	mm	-	-
Evaporation maximum	7.53	mm	30-Oct-15	-
SUNSHINE				
Sunshine duration weekly average	7 hrs	10 min	-	-
Sunshine absolute max.	11 hrs	6 min	30-Oct-15	-
Sunshine absolute min.	0 hrs	0 min	27-Oct-15	-
Solar radiation weekly average	-	Whr / m ² / day	-	-
Solar radiation absolute max.	-	Whr / m ² / day	-	-
Solar radiation absolute min.	-	Whr / m ² / day	-	-
REMARKS				

* Wind energy at a height of 10 m for windspeeds of 4 m/s or more.

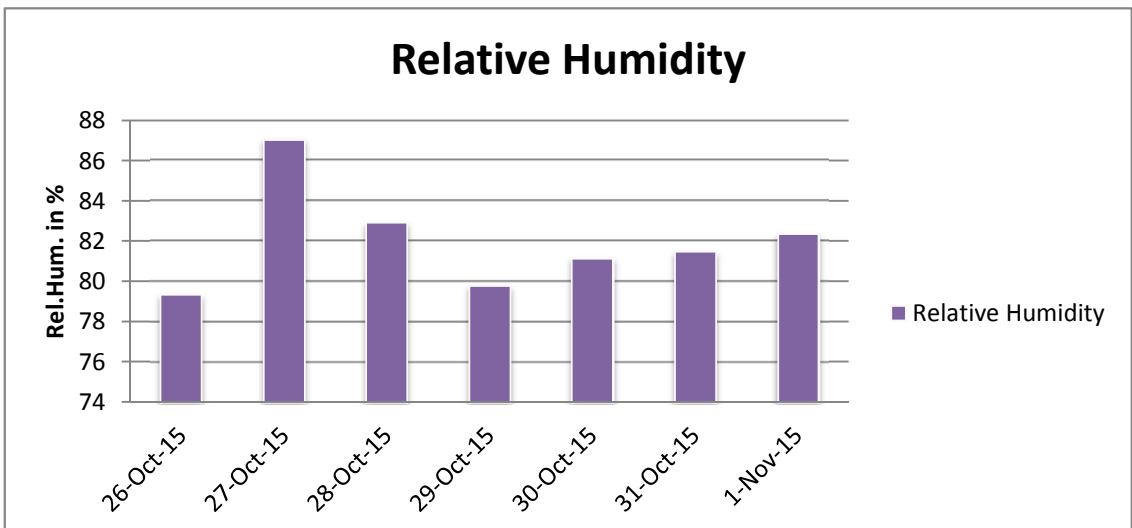
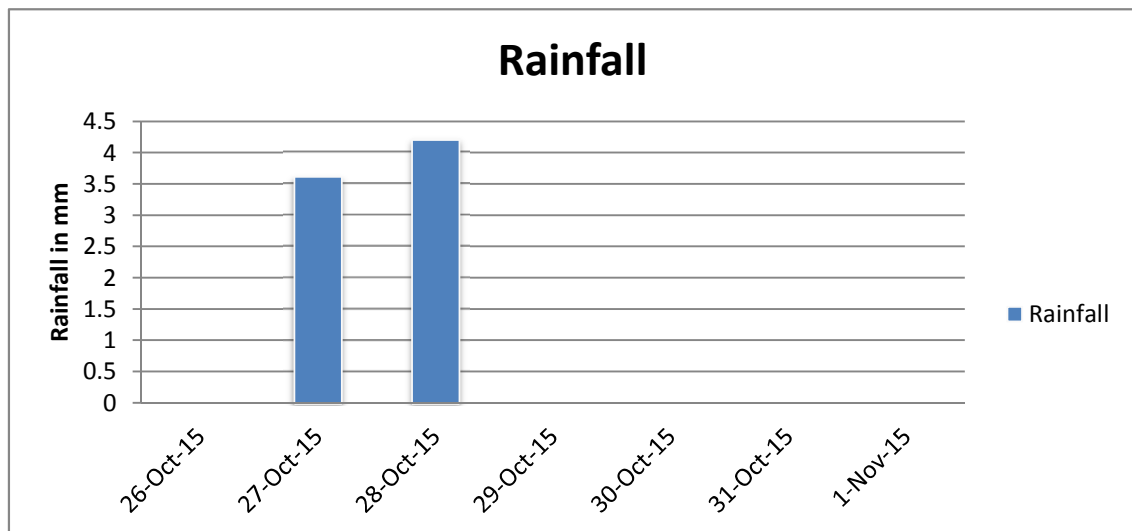
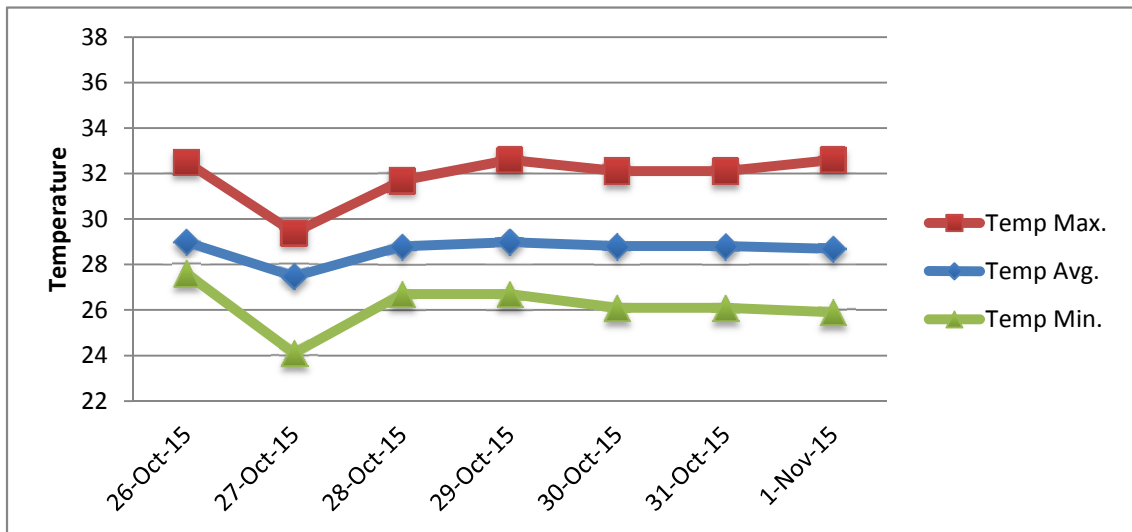
** Extremes based on monthly data (30 years)

*** Sunshine duration in hrs (solar time)

**** Solar radiation (local time)



METEOROLOGICAL DEPARTMENT CURAÇAO CLIMATOLOGICAL SUMMARY



METEOROLOGICAL DEPARTMENT CURAÇAO CLIMATOLOGICAL SUMMARY

