

METEOROLOGICAL DEPARTMENT CURAÇAO CLIMATOLOGICAL SUMMARY

Week 45

Week Starting:	2-Nov	2015
Week Ending:	8-Nov	2015

Station: HATO, Airport

RAIN			DATE	TIME
Rainfall total	46.6	mm	-	-
Rainfall 24 hour's maximum	20.8	mm	8-Nov-15	-
Rainfall amount of days >= 1.0 mm	5		-	-
Rainfall cumulative	251.8	mm	-	-
TEMPERATURE				
Temperature weekly average	28.5	°C	-	-
Temperature weekly max. average	31.9	°C	-	-
Temperature absolute max.	33.3	°C	4-Nov-15	13:07
Temperature weekly min. average	26.1	°C	-	-
Temperature absolute min.	25.1	°C	6-Nov-15	12:00
Relative humidity weekly average	81.9	%	-	-
WIND				
Wind speed weekly average	10.9	kts	-	-
Wind speed average max.	24.4	kts	-	-
Wind speed absolute max.	28	kts	6-Nov-15	11:58
Wind vector weekly average	113	°	-	-
Wind energy potential total *	20,488	KWhr / m ²	-	-
Wind energy weekly average *	2927	Whr / m ² / day	-	-
Wind energy potential maximum *	4614	Whr / m ² / day	8-Nov-15	-
Wind energy potential minimum *	1611	Whr / m ² / day	2-Nov-15	-
EVAPORATION				
Evaporation daily average	5.69	mm	-	-
Evaporation weekly total	39.85	mm	-	-
Evaporation maximum	7.97	mm	5-Nov-15	-
SUNSHINE				
Sunshine duration weekly average	8 hrs	23 min	-	-
Sunshine absolute max.	10 hrs	18 min	5-Nov-15	-
Sunshine absolute min.	4 hrs	30 min	3-Nov-15	-
Solar radiation weekly average	-	Whr / m ² / day	-	-
Solar radiation absolute max.	-	Whr / m ² / day	-	-
Solar radiation absolute min.	-	Whr / m ² / day	-	-
REMARKS				

* Wind energy at a height of 10 m for windspeeds of 4 m/s or more.

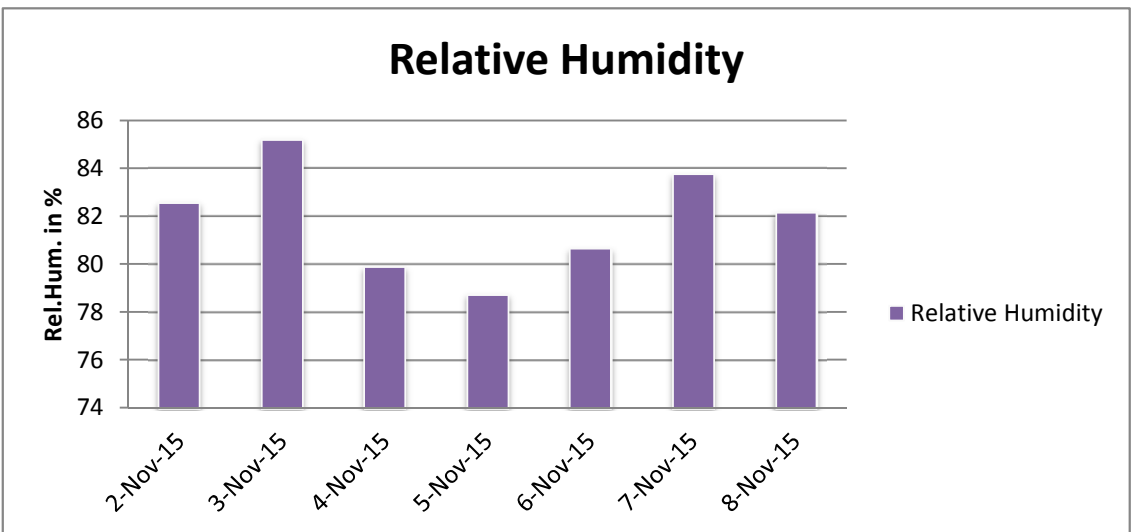
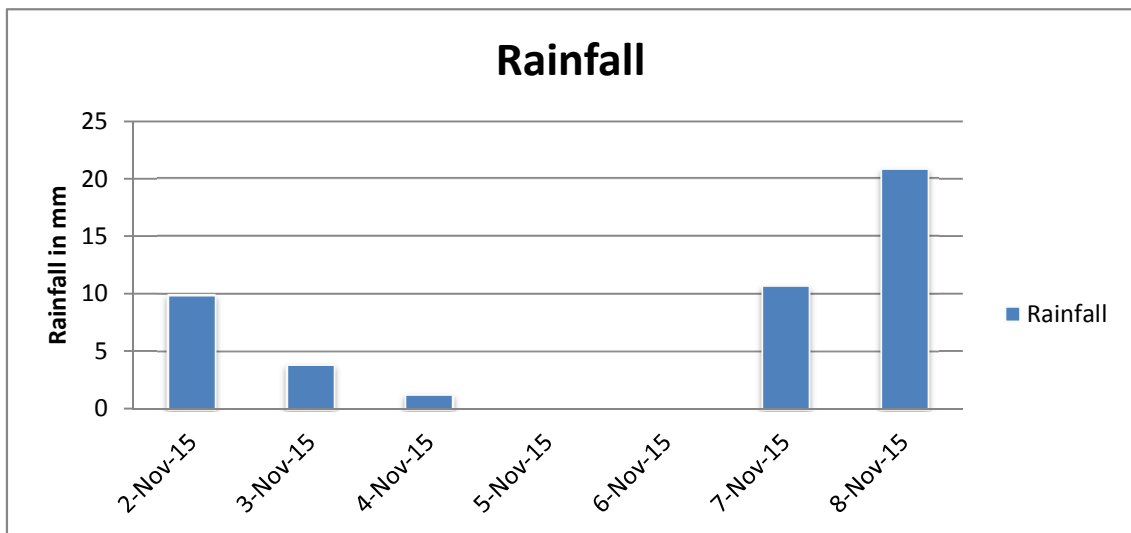
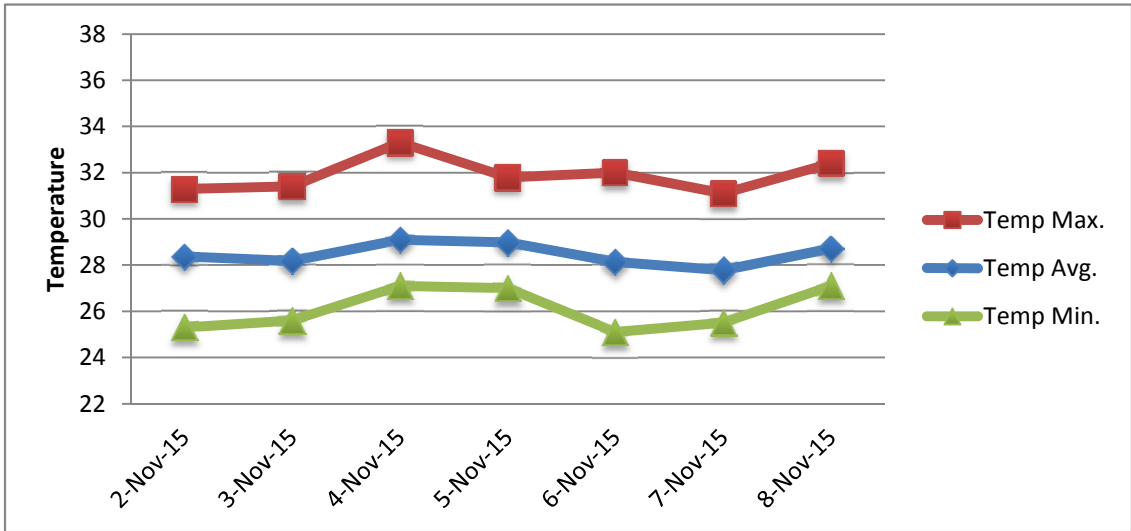
** Extremes based on monthly data (30 years)

*** Sunshine duration in hrs (solar time)

**** Solar radiation (local time)



METEOROLOGICAL DEPARTMENT CURAÇAO CLIMATOLOGICAL SUMMARY



METEOROLOGICAL DEPARTMENT CURAÇAO CLIMATOLOGICAL SUMMARY

