

METEOROLOGICAL DEPARTMENT CURAÇAO CLIMATOLOGICAL SUMMARY

Week 47

Week Starting:	16-Nov	2015
Week Ending:	22-Nov	2015

Station: HATO, Airport

RAIN			DATE	TIME
Rainfall total	16.9	mm	-	-
Rainfall 24 hour's maximum	12.5	mm	22-Nov-15	-
Rainfall amount of days >= 1.0 mm	2		-	-
Rainfall cumulative	275.6	mm	-	-
TEMPERATURE				
Temperature weekly average	27.9	°C	-	-
Temperature weekly max. average	30.9	°C	-	-
Temperature absolute max.	32.5	°C	17-Nov-15	12:23
Temperature weekly min. average	25.7	°C	-	-
Temperature absolute min.	24.3	°C	19-Nov-15	3:06
Relative humidity weekly average	80.3	%	-	-
WIND				
Wind speed weekly average	11.2	kts	-	-
Wind speed average max.	25.0	kts	-	-
Wind speed absolute max.	31	kts	17-Nov-15	11:03
Wind vector weekly average	114	°	-	-
Wind energy potential total *	23,366	KWhr / m ²	-	-
Wind energy weekly average *	3338	Whr / m ² / day	-	-
Wind energy potential maximum *	6936	Whr / m ² / day	16-Nov-15	-
Wind energy potential minimum *	749	Whr / m ² / day	20-Nov-15	-
EVAPORATION				
Evaporation daily average	6.62	mm	-	-
Evaporation weekly total	46.36	mm	-	-
Evaporation maximum	9.76	mm	16-Nov-15	-
SUNSHINE				
Sunshine duration weekly average	7 hrs	23 min	-	-
Sunshine absolute max.	11 hrs	0 min	20-Nov-15	-
Sunshine absolute min.	0 hrs	0 min	19-Nov-15	-
Solar radiation weekly average	-	Whr / m ² / day	-	-
Solar radiation absolute max.	-	Whr / m ² / day	-	-
Solar radiation absolute min.	-	Whr / m ² / day	-	-
REMARKS				

* Wind energy at a height of 10 m for windspeeds of 4 m/s or more.

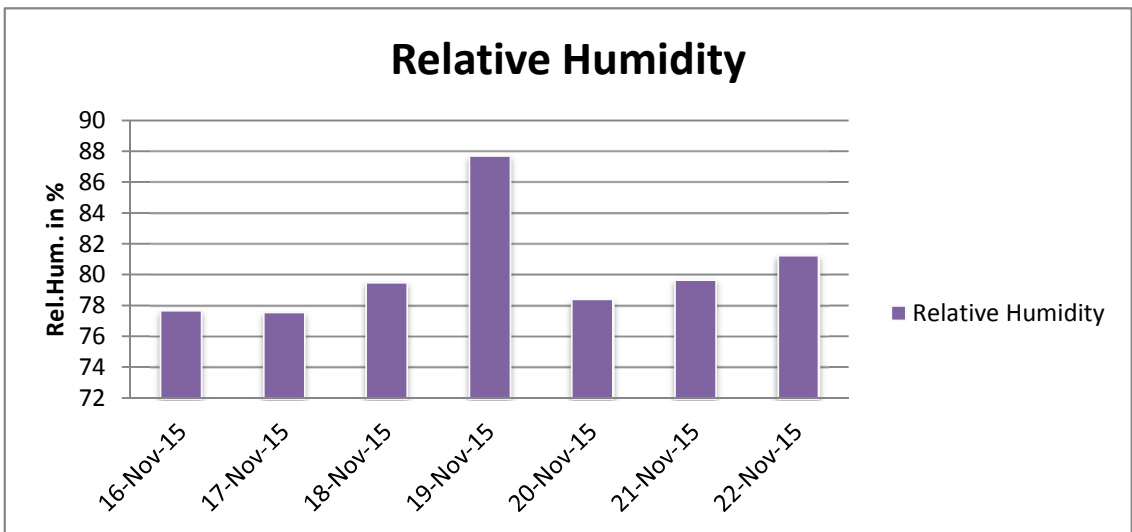
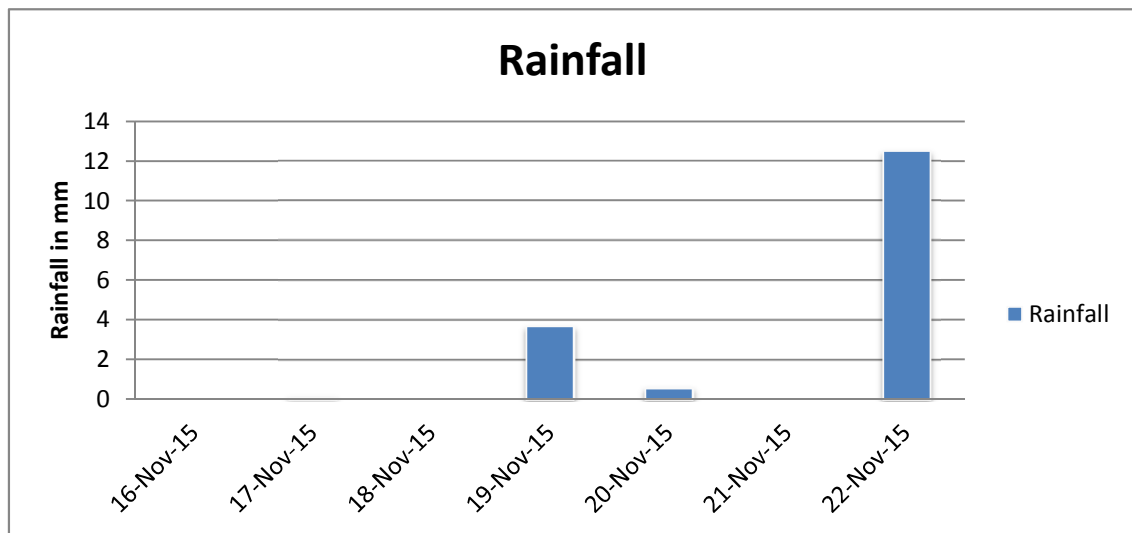
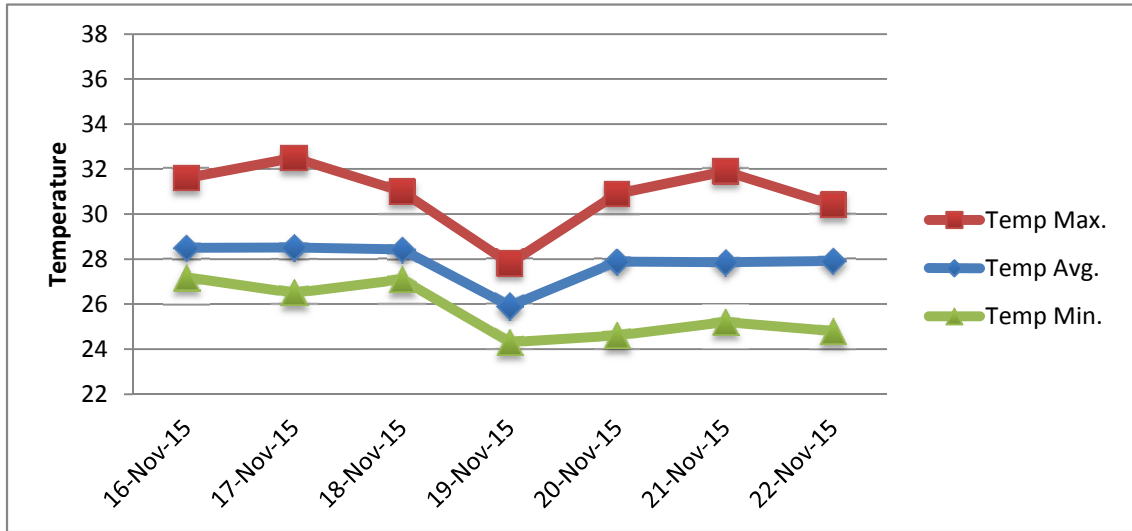
** Extremes based on monthly data (30 years)

*** Sunshine duration in hrs (solar time)

**** Solar radiation (local time)



METEOROLOGICAL DEPARTMENT CURAÇAO CLIMATOLOGICAL SUMMARY



METEOROLOGICAL DEPARTMENT CURAÇAO CLIMATOLOGICAL SUMMARY

