

METEOROLOGICAL DEPARTMENT CURAÇAO CLIMATOLOGICAL SUMMARY

Week 49

Week Starting:	30-Nov	2015
Week Ending:	6-Dec	2015

Station: HATO, Airport

RAIN			DATE	TIME
Rainfall total	0.9	mm	-	-
Rainfall 24 hour's maximum	0.9	mm	5-Dec-15	-
Rainfall amount of days >= 1.0 mm	0		-	-
Rainfall cumulative	337.0	mm	-	-
TEMPERATURE				
Temperature weekly average	28.3	°C	-	-
Temperature weekly max. average	31.1	°C	-	-
Temperature absolute max.	31.8	°C	2-Dec-15	12:15
Temperature weekly min. average	26.9	°C	-	-
Temperature absolute min.	26.1	°C	6-Dec-15	23:50
Relative humidity weekly average	80.1	%	-	-
WIND				
Wind speed weekly average	14.3	kts	-	-
Wind speed average max.	28.3	kts	-	-
Wind speed absolute max.	35	kts	2-Dec-15	10:51
Wind vector weekly average	120	°	-	-
Wind energy potential total *	42,650	KWhr / m ²	-	-
Wind energy weekly average *	6093	Whr / m ² /day	-	-
Wind energy potential maximum *	9170	Whr / m ² /day	2-Dec-15	-
Wind energy potential minimum *	3654	Whr / m ² /day	4-Dec-15	-
EVAPORATION				
Evaporation daily average	6.10	mm	-	-
Evaporation weekly total	42.69	mm	-	-
Evaporation maximum	7.52	mm	2-Dec-15	-
SUNSHINE				
Sunshine duration weekly average	8 hrs	21 min	-	-
Sunshine absolute max.	11 hrs	0 min	5-Dec-15	-
Sunshine absolute min.	0 hrs	0 min	3-Dec-15	-
Solar radiation weekly average	-	Whr / m ² /day	-	-
Solar radiation absolute max.	-	Whr / m ² /day	-	-
Solar radiation absolute min.	-	Whr / m ² /day	-	-
REMARKS				

* Wind energy at a height of 10 m for windspeeds of 4 m/s or more.

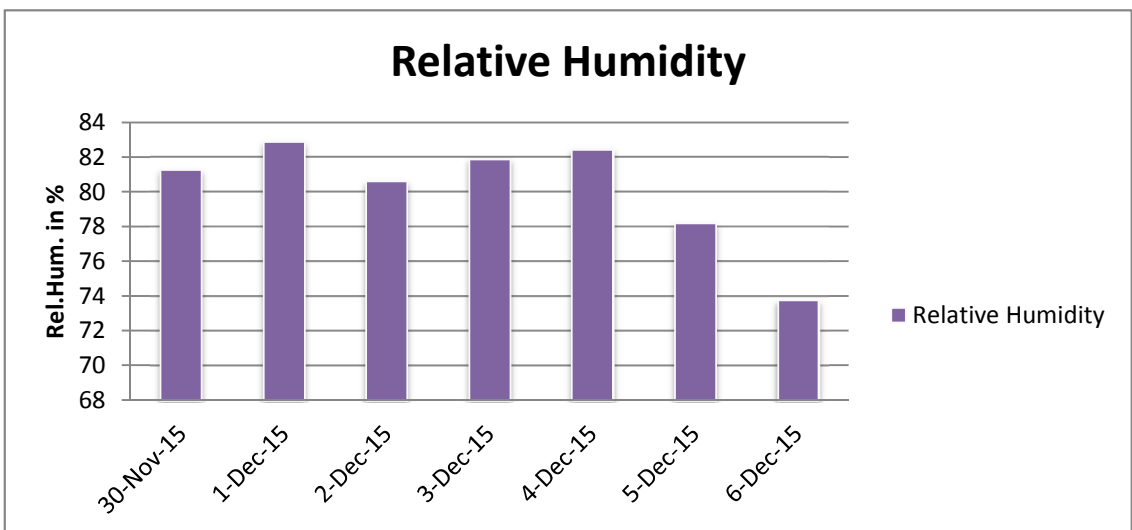
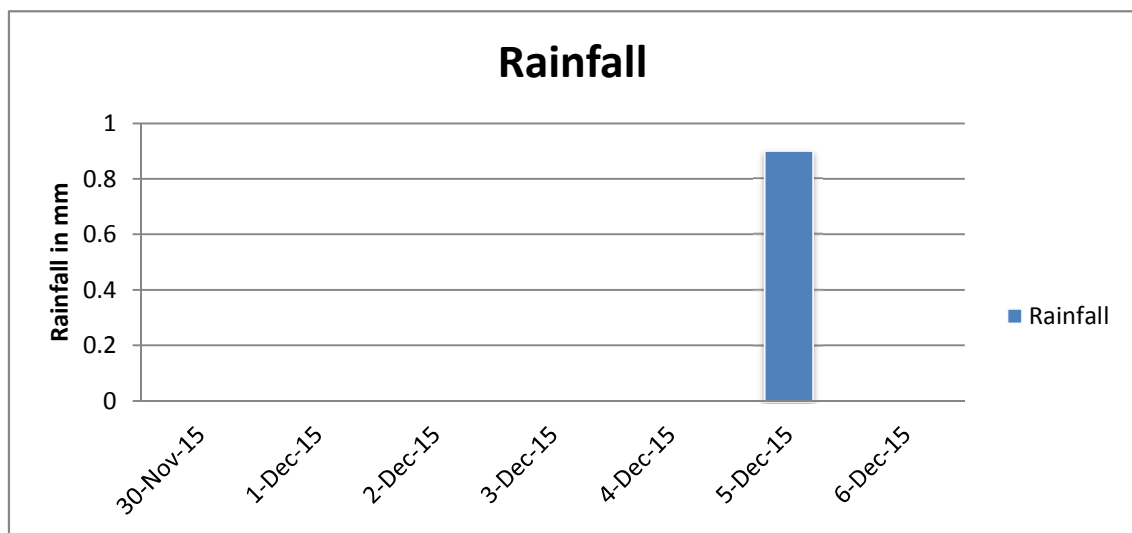
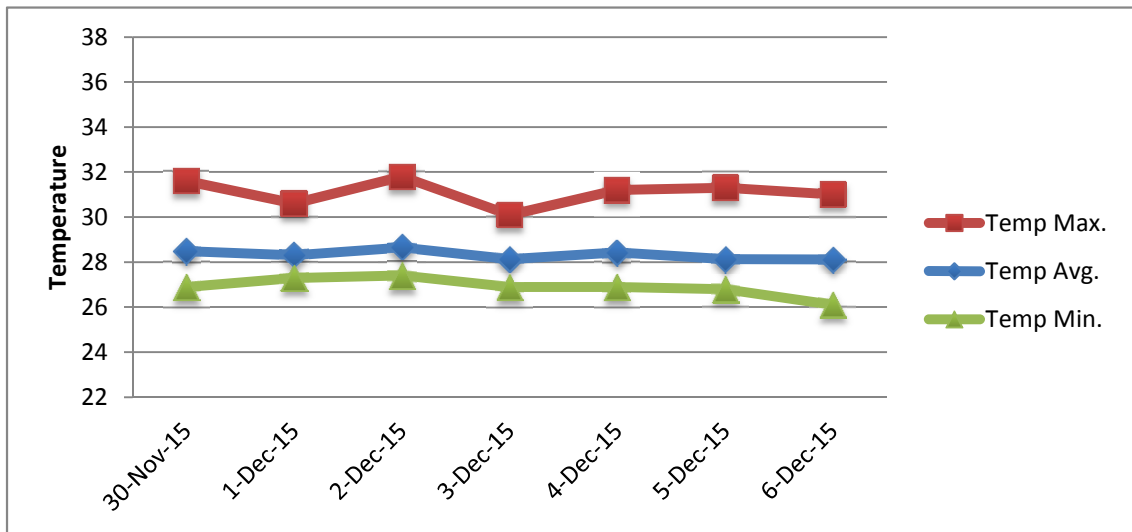
** Extremes based on monthly data (30 years)

*** Sunshine duration in hrs (solar time)

**** Solar radiation (local time)



METEOROLOGICAL DEPARTMENT CURAÇAO CLIMATOLOGICAL SUMMARY



METEOROLOGICAL DEPARTMENT CURAÇAO CLIMATOLOGICAL SUMMARY

