

METEOROLOGICAL DEPARTMENT CURAÇAO CLIMATOLOGICAL SUMMARY

Week 50

Week Starting:	7-Dec	2015
Week Ending:	13-Dec	2015

Station: HATO, Airport

RAIN			DATE	TIME
Rainfall total	0.0	mm	-	-
Rainfall 24 hour's maximum	0.0	mm	-	-
Rainfall amount of days >= 1.0 mm	0		-	-
Rainfall cumulative	337.0	mm	-	-
TEMPERATURE				
Temperature weekly average	27.9	°C	-	-
Temperature weekly max. average	30.7	°C	-	-
Temperature absolute max.	31.5	°C	9-Dec-15	12:19
Temperature weekly min. average	26.4	°C	-	-
Temperature absolute min.	25.6	°C	7-Dec-15	6:29
Relative humidity weekly average	78.9	%	-	-
WIND				
Wind speed weekly average	14.8	kts	-	-
Wind speed average max.	28.7	kts	-	-
Wind speed absolute max.	33	kts	9-Dec-15	9:38
Wind vector weekly average	120	°	-	-
Wind energy potential total *	45,613	KWhr / m ²	-	-
Wind energy weekly average *	6516	Whr / m ² / day	-	-
Wind energy potential maximum *	8008	Whr / m ² / day	9-Dec-15	-
Wind energy potential minimum *	5024	Whr / m ² / day	7-Dec-15	-
EVAPORATION				
Evaporation daily average	6.57	mm	-	-
Evaporation weekly total	46.015	mm	-	-
Evaporation maximum	9.07	mm	7-Dec-15	-
SUNSHINE				
Sunshine duration weekly average	9 hrs	33 min	-	-
Sunshine absolute max.	10 hrs	6 min	10-Dec-15	-
Sunshine absolute min.	7 hrs	48 min	13-Dec-15	-
Solar radiation weekly average	-	Whr / m ² / day	-	-
Solar radiation absolute max.	-	Whr / m ² / day	-	-
Solar radiation absolute min.	-	Whr / m ² / day	-	-
REMARKS				

* Wind energy at a height of 10 m for windspeeds of 4 m/s or more.

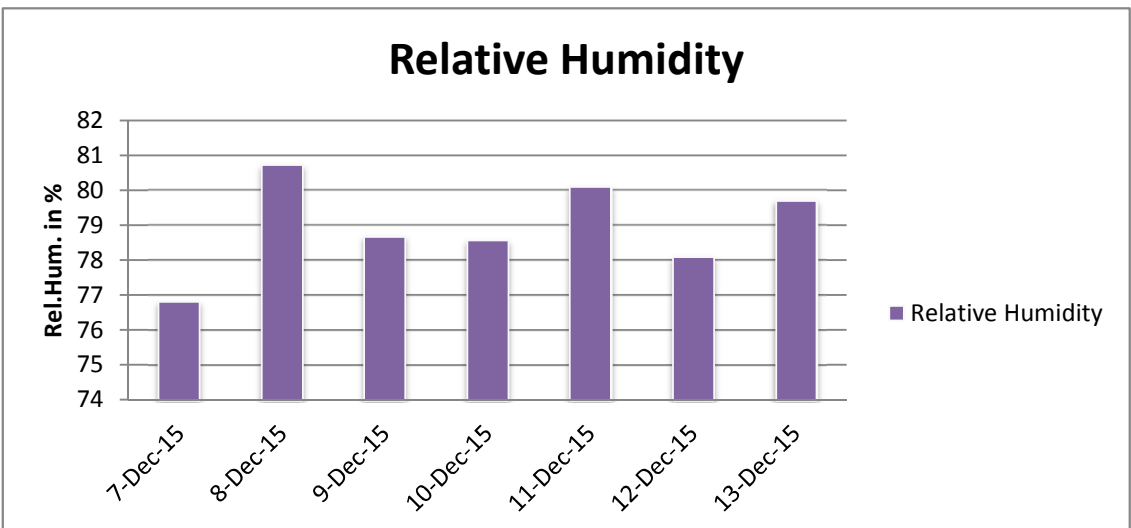
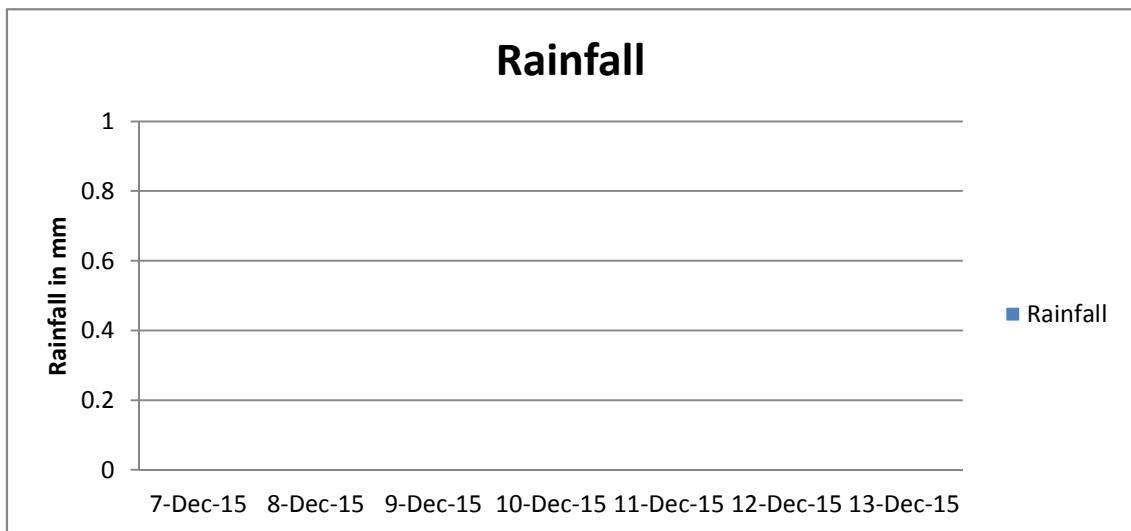
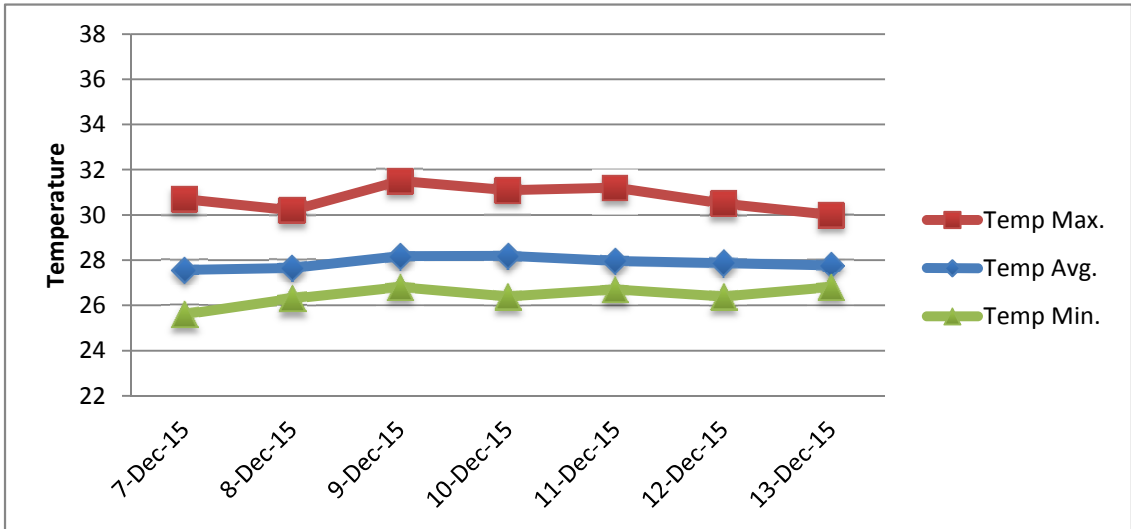
** Extremes based on monthly data (30 years)

*** Sunshine duration in hrs (solar time)

**** Solar radiation (local time)



METEOROLOGICAL DEPARTMENT CURAÇAO CLIMATOLOGICAL SUMMARY



METEOROLOGICAL DEPARTMENT CURAÇAO CLIMATOLOGICAL SUMMARY

