

METEOROLOGICAL DEPARTMENT CURAÇAO CLIMATOLOGICAL SUMMARY

Week 52

Week Starting:	21-Dec	2015
Week Ending:	27-Dec	2015

Station: HATO, Airport

RAIN			DATE	TIME
Rainfall total	4.1	mm	-	-
Rainfall 24 hour's maximum	2.1	mm	26-Dec-15	-
Rainfall amount of days >= 1.0 mm	2		-	-
Rainfall cumulative	341.1	mm	-	-
TEMPERATURE				
Temperature weekly average	27.1	°C	-	-
Temperature weekly max. average	29.9	°C	-	-
Temperature absolute max.	31.0	°C	24-Dec-15	11:48
Temperature weekly min. average	25.0	°C	-	-
Temperature absolute min.	23.7	°C	27-Dec-15	5:58
Relative humidity weekly average	81.1	%	-	-
WIND				
Wind speed weekly average	15.4	kts	-	-
Wind speed average max.	31.1	kts	-	-
Wind speed absolute max.	36	kts	22-Dec-15	12:37
Wind vector weekly average	120	°	-	-
Wind energy potential total *	50,714	KWhr / m ²	-	-
Wind energy weekly average *	7245	Whr / m ² / day	-	-
Wind energy potential maximum *	8366	Whr / m ² / day	23-Dec-15	-
Wind energy potential minimum *	6070	Whr / m ² / day	26-Dec-15	-
EVAPORATION				
Evaporation daily average	6.59	mm	-	-
Evaporation weekly total	46.13	mm	-	-
Evaporation maximum	9.51	mm	23-Dec-15	-
SUNSHINE				
Sunshine duration weekly average	8 hrs	10 min	-	-
Sunshine absolute max.	10 hrs	18 min	26-Dec-15	-
Sunshine absolute min.	5 hrs	12 min	25-Dec-15	-
Solar radiation weekly average	-	Whr / m ² / day	-	-
Solar radiation absolute max.	-	Whr / m ² / day	-	-
Solar radiation absolute min.	-	Whr / m ² / day	-	-
REMARKS				

* Wind energy at a height of 10 m for windspeeds of 4 m/s or more.

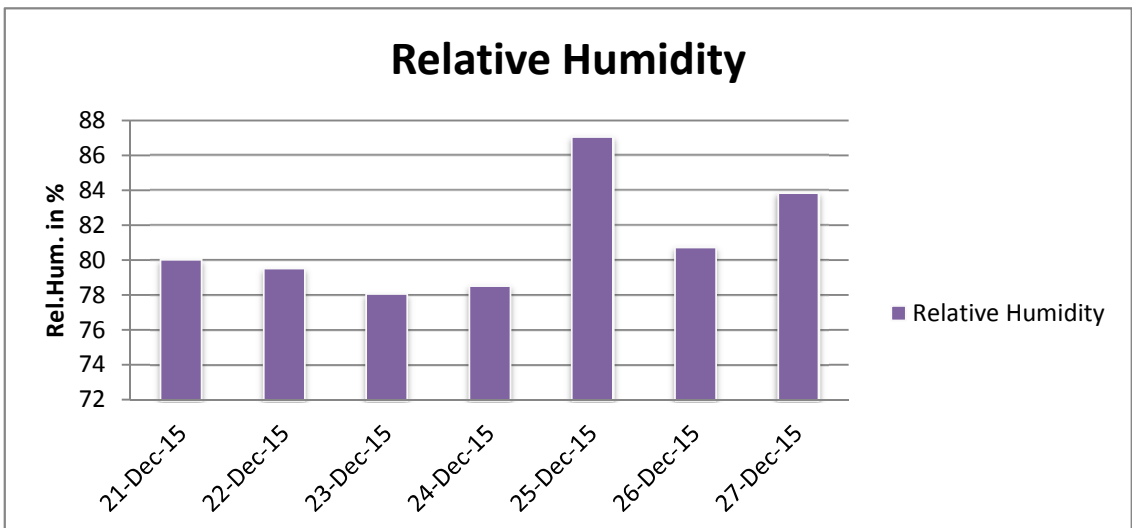
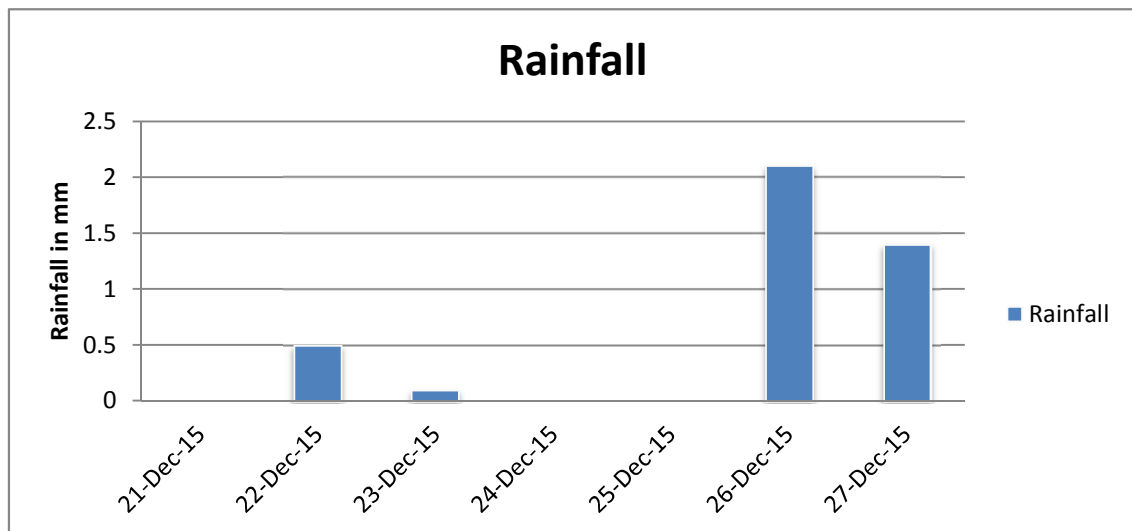
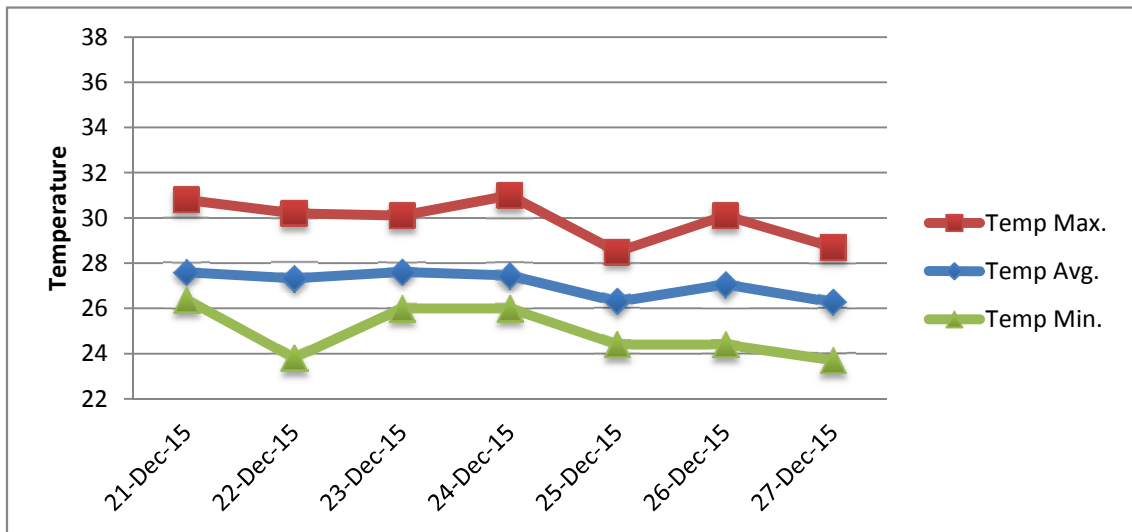
** Extremes based on monthly data (30 years)

*** Sunshine duration in hrs (solar time)

**** Solar radiation (local time)



METEOROLOGICAL DEPARTMENT CURAÇAO CLIMATOLOGICAL SUMMARY



METEOROLOGICAL DEPARTMENT CURAÇAO CLIMATOLOGICAL SUMMARY

